



COEUR
D'ARDECHE

TOURIST OFFICE

TREASURE HUNT

LET'S DISCOVER...
LES OLLIERES-SUR-EYRIEUX



STARTING POINT: TOURIST OFFICE

QUESTION 1: WHAT WAS THE PLACE WHERE THE STATION MASTER STORED THE TAIL LAMPS CALLED?

Lanternerie

Lampisterie

Lumièrerie

QUESTION 2: WHAT IS THE ALTITUDE OF THE TRAIN STATION OF LES OLLIÈRES-SUR-EYRIEUX?

202,90 m

203,90 m

204,90 m

QUESTION 3: HOW MANY BASINS ARE IN THE WASHHOUSE IN THE "MONTÉE DE LA CHAPELLE"?

2

3

4

QUESTION 4: WHAT DATE IS ENGRAVED IN THIS CARTOUCHE?

1612

1774

1829



© OTPCA, Marianne Mercœur

QUESTION 5: COMPLETE THE DRAWING OF THE UPPER PART OF THE DOOR LOCATED IN THE "RUE FOUGEIROL".

QUESTION 6: HOW MANY WINDOWS OF THIS SHAPE CAN BE SEEN IN THE FRONT WALL OVERLOOKING THE EYRIEUX?

6

9

12



© OTPCA

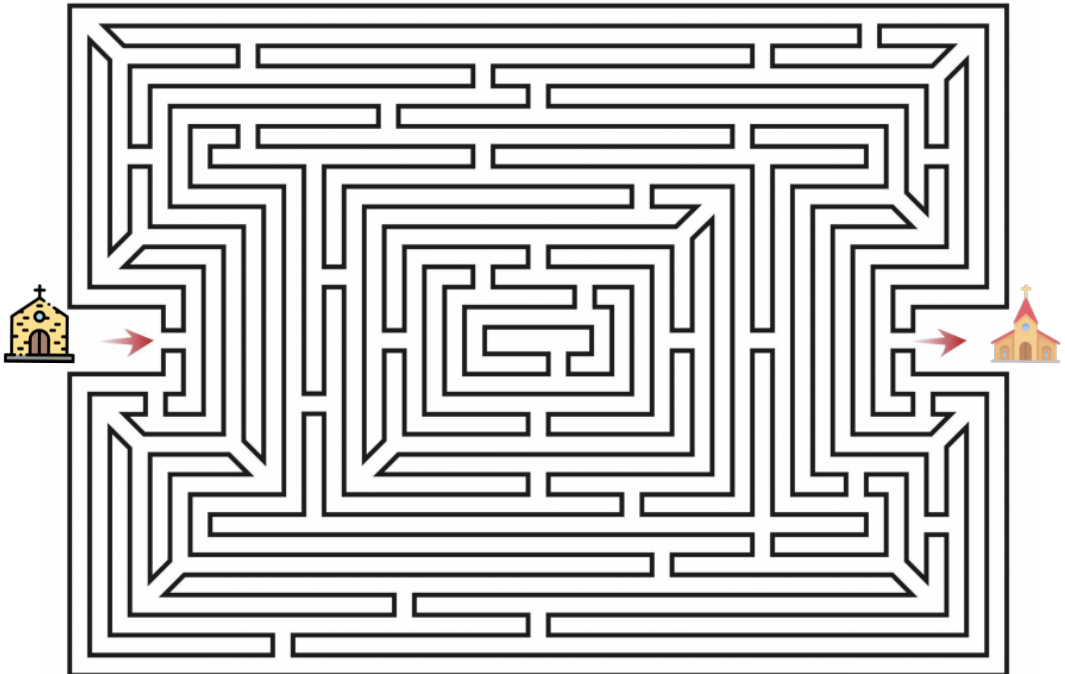


QUESTION 7: WHAT WAS THE ARCH WE CAN SEE IN THIS PICTURE?

- An opening to let water through
- The arch from an ancient bridge
- An underground passageway to escape across the river



QUESTION 8: TRY TO REACH THE CATHOLIC CHURCH, STARTING FROM THE TEMPLE.





Rue du Bas Prales

Dolce Via

Rue de la Douce

Rue Fougerol

Montée de la Combe

- D 120 -

Ruelle de l'Eyrieux

- D 120 -

L'Eyrieux

PLACE DU TEMPLE

Temple

Route de la Plage

Voie de la Plaine

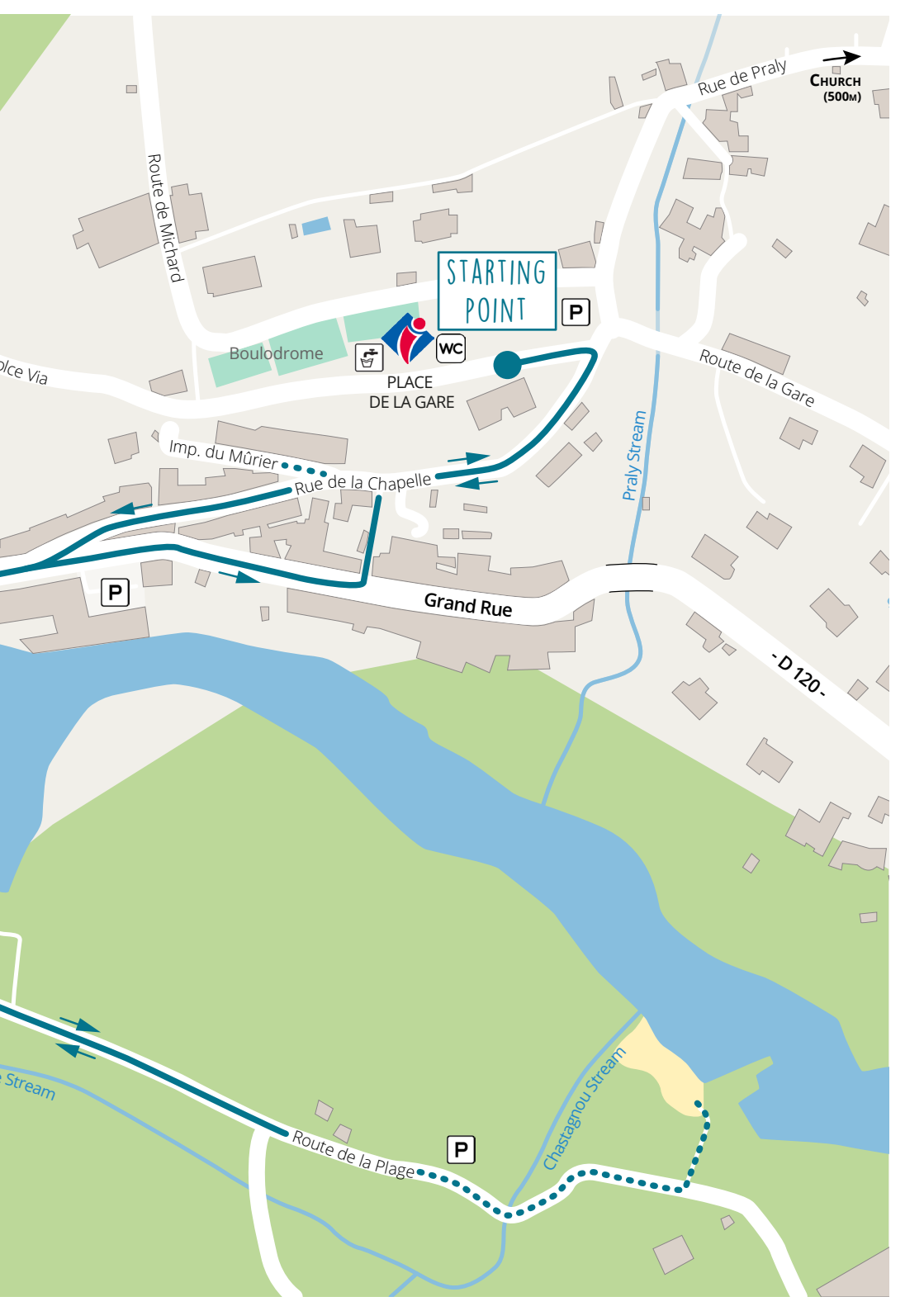
- C8 -

Route de Tartary

Trémouline

Route de Privas
- D2 -

N 50 m



CHURCH
(500M)

STARTING
POINT

P

Boulodrome



PLACE
DE LA GARE

Route de la Gare

Route de Michard

Route de la Gare

Imp. du Mûrier

Rue de la Chapelle

Praly Stream

P

Grand Rue

-D 120-

Stream

Route de la Plage

P

Chastagnou Stream

QUESTION 9: HOW MANY READERS DOES “LE PETIT JOURNAL” HAVE?

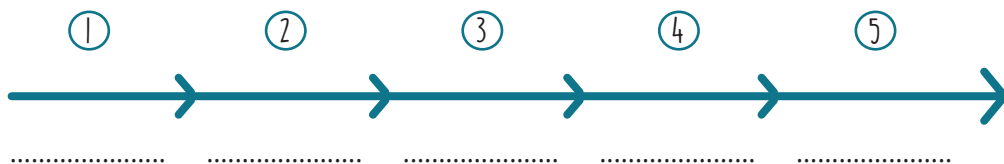
- 50,000
- 500,000
- 5,000,000

QUESTION 10: ON THE LEFT BANK OF THE RIVER, BY THE «THÉOULE» BEACH, YOU CAN SEE A SMALL TOWER. WHAT WAS THE PURPOSE OF THIS TOWER?

- A dovecote
- A prison
- A dungeon




QUESTION 11: PUT THE DIFFERENT STEPS IN THE SILK MAKING PROCESS IN THE RIGHT ORDER.



- **Moulinage** (the act of throwing - twisting - the silk yarn on itself)
- **Éducation** (the act of raising silkworms)
- **Filature** (the act of unwinding the silk cocoon)
- **Teinture** (the act of giving colour to yarn)
- **Tissage** (the act of turning yarn into tissue)



QUESTION 11^A: FIND THE FOLLOWING WORDS IN THE GRID, THE REMAINING LETTERS REVEAL THE NICKNAME OF THE SILKWORM. - - - - -

 Words may be placed from right to left, left to right, top to bottom and vice versa. Some letters may be used more than once.

C	O	C	O	O	N	M	S	T
H	G	R	E	G	E	R	I	A
A	E	A	G	N	A	I	L	V
N	R	B	I	E	F	V	K	E
E	I	S	I	L	K	E	W	L
L	W	O	R	K	E	R	O	W
B	O	B	B	I	N	N	R	A
S	I	L	K	F	A	R	M	T
S	P	I	N	N	I	N	G	E
M	U	L	B	E	R	R	Y	R

- BIEF
- BOBBIN
- COCOON
- CHANEL
- GREGÉ
- MULBERRY
- RIVER
- SILK
- SILKFARM
- SILKWORM
- SPINNING
- TAVEL
- WATER
- WIRE
- WORKER

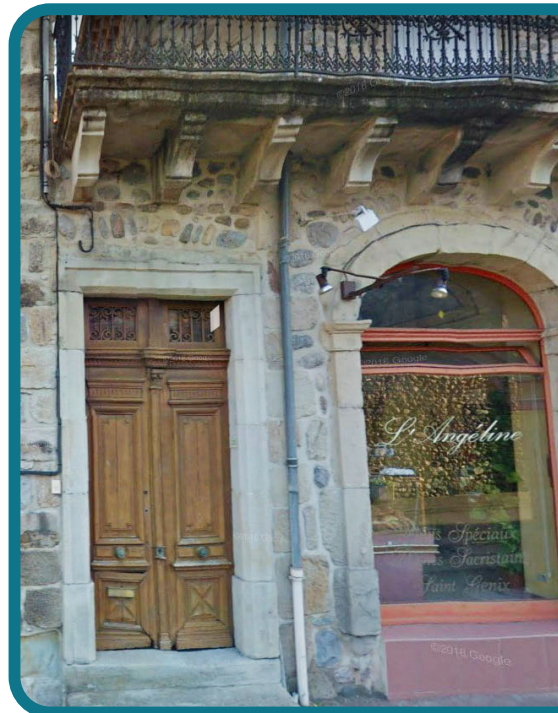
QUESTION 12: WHAT CAN YOU SEE ACROSS THIS DOOR SITUATED IN THE «GRAND RUE»?

- A garage
- A cemetery
- A shed



BONUS QUESTION: WHAT'S THE ORIGIN OF THE NAME "LES OLLIÈRES-SUR-EYRIEUX"?

- A place where cooking pots were made
- A place where oil was made
- A place where olives were cultivated



HURRY BACK TO THE TOURIST OFFICE AND WE'LL CHECK YOUR ANSWERS.

If you have 9 or more correct answers: 😄

You are a true adventurer! We can't hide anything from you!

If you have between 6 and 8 correct answers: 😊

You are a part time adventurer! Remember the saying «less haste, more speed».

If you get fewer than 5 correct answers: 😞

Les Ollières still holds many secrets for you. Better luck next time!

A few tips before you get going:

- Keep your eyes wide open as you walk around the village
- Listen to everyone in your group
- Read the signs carefully to get to know the streets and buildings around you



Other treasure hunts available: La Voulte-sur-Rhône, Privas, St-Sauveur-de-Montagut...

CŒUR D'ARDÈCHE TOURIST OFFICE

04 75 20 81 81

accueil@coeur-ardeche.fr - www.coeur-ardeche.fr