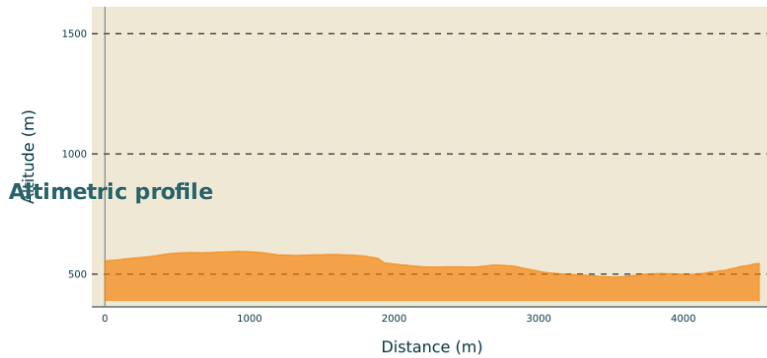


# Chesnut discovery trail (sentier découverte de la châtaigne)

PAYS DES VANS EN CEVENNES - SAINTE-MARGUERITE-LAFIGERE



Min elevation 488 m Max elevation 595 m

## Useful information

Practice : Hike

Duration : 2 h

Length : 4.5 km

Trek ascent : 115 m

Difficulty : Easy

Type : Loop

Themes : Châtaigneraie, Patrimoine agricole

## Trek

**Departure** : Hamlet of Féreyrolles, Sainte-Marguerite-Lafigère

**Arrival** : Hamlet of Féreyrolles, Sainte-Marguerite-Lafigère

**Markings** : ■ Yellow markup

Cities : 1. SAINTE-MARGUERITE-LAFIGERE 2. MONTSELGUES

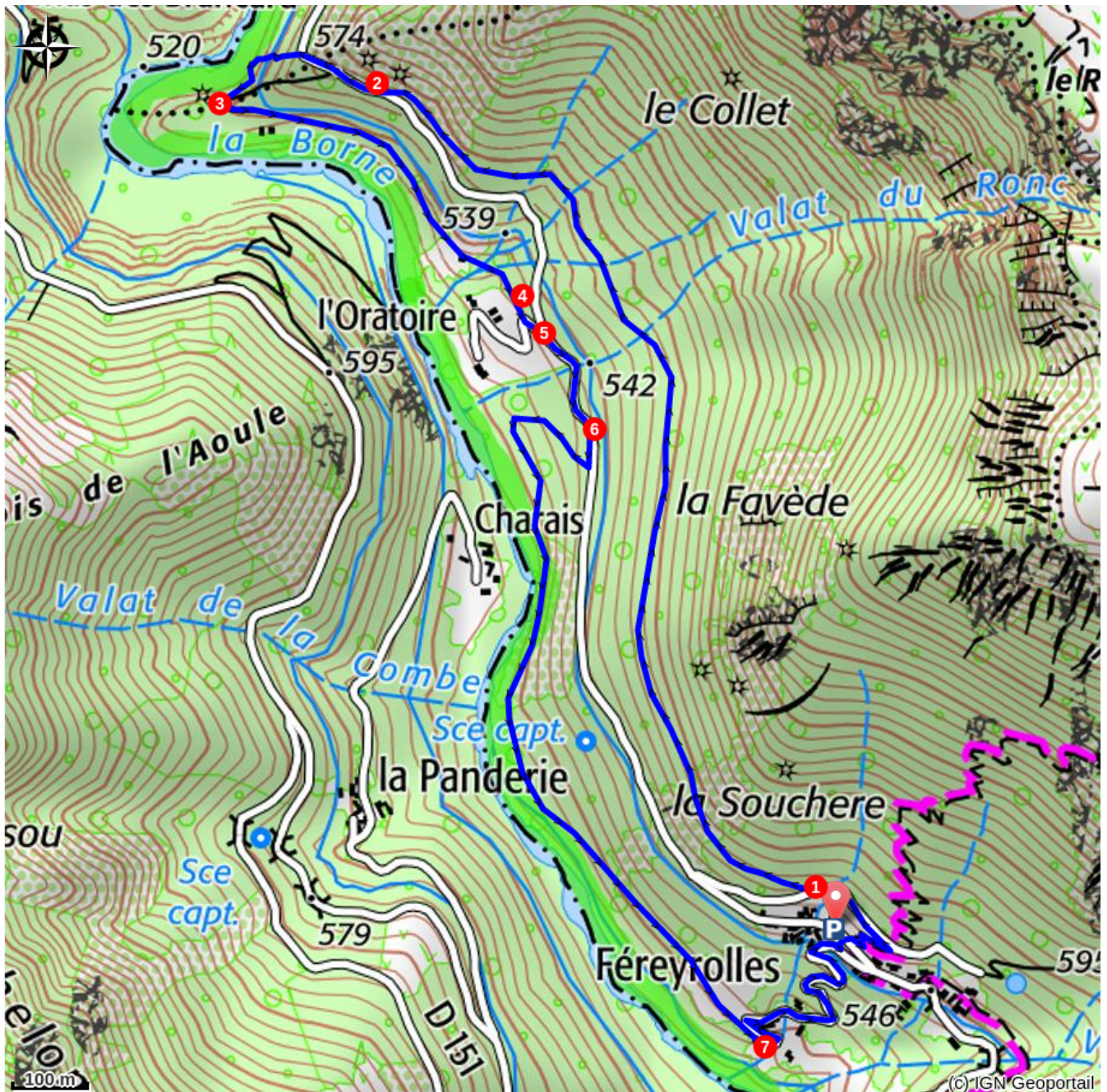
P - At the start sign in the hamlet of Féreyrolles, take the path that climbs to the right. This path leads to a track, turn left, then 250m further on, turn right onto the canal path. Follow the chestnut trail signs.

- In this first section, continue straight on for 1km. With the 5 red frames, use your sense of observation to identify traces of human intervention in the landscape. At the "Sardoune" theme panel, the path continues downhill to a small road.
- Turn right and walk 300m. Go down the path on the left until you reach the canal. Turn left and you'll see a sign marked "le Béal".
- Cross the canal and continue along the path on the left. Walk through the chestnut orchards and then a meadow where there's a third panel with a 19th century illustration of a landscape of the Borne valley.
- At the end of the meadow, continue on the track, turning left to reach another theme sign entitled "l'arbre à pain" (Europe's version of the breadfruit tree). After 50m, take the road.
- To continue along the initial trail, take the road left then, at the crossroads, go right. Walk along this small road for 350m. (For the return trip, you can take the road on your right to get to the Geopark site. If

you take this 600m detour, you'll discover a geological curiosity - "balls" of polished granite that fell onto the riverbed several million years ago).

6. 🚶 Take the path on the right to reach a chestnut orchard. Continue straight ahead on the path past the information panel "les châtaignes d'Ardèche".
7. 🚶 At the end of the trail, take the road again and head left to return to the hamlet of Féreyrolles.

You can also carry straight on by following the road then taking a small path on your right. This additional 1.5km loop, which takes about half an hour, takes you past a goat farm. Cross the road when you get to the stone cross, climb up to the old canal and go left to return to Féreyrolles.



## **How to come ?**

### **Access**

From Joyeuse (35 km) join Les Vans (22 km) and take the D113 to access Sainte-Marguerite-Lafigère.

### **Advised parking**

Hamlet of Féreyrolles, Sainte-Marguerite-Lafigère



### **Information desks**

#### **Office de tourisme des Cévennes d'Ardèche**

[contact@cevennes-ardeche.com](mailto:contact@cevennes-ardeche.com)

<https://www.cevennes-ardeche.com/>