



Chalet Les Tissourds

Collineige

+44 (0)1483 579242

sales@collineige.com

www.collineige.com

[skype: collineigesales.uk](https://www.skype.com/en/contacts/collineigesales.uk)



4 Bedrooms

3 Bathrooms

Parking

5 minutes walk to
Aiguille du Midi
Cable Car

5 - 10 minutes walk
to Chamonix centre

*Beautifully
restored Maison de
Pays chalet with
exquisite hand
crafted furnishings.*

NAVIGATION

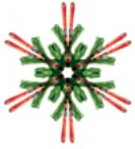
[Overview](#)

[Interior](#)

[Layout](#)

[Service](#)

[Location](#)



Built originally in 1924 this chalet was beautifully restored and refurbished in 2009, a modern design within a traditional setting makes it a delicious mixture of old and new.

The interior is impressive, with the hand-made Ben Whistler furniture complementing the innovative design and open-plan layout.

NAVIGATION

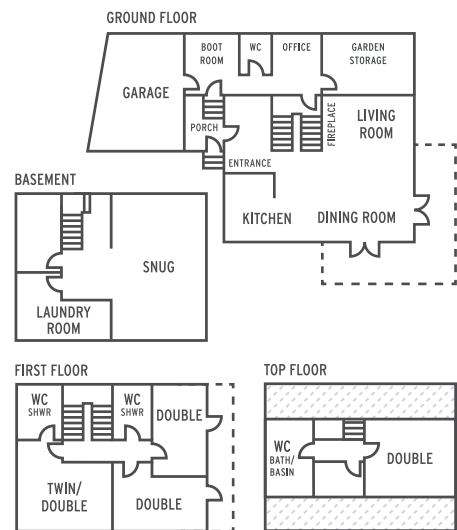
[Overview](#)

[Interior](#)

[Layout](#)

[Service](#)

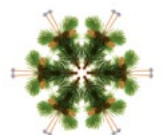
[Location](#)



There are 3 double bedrooms, 1 twin bedroom and 3 bathrooms across the upper two floors, whilst on the ground floor is an open-plan kitchen and living room, there is also a cloakroom with loo and a boot room with boot warmers. On the lower ground floor there is a cosy snug with beanbags and a 130cm screen, there you can chill out with some DVDs.



200 sq metres
Flat screen TV
Wifi
Log fire
Parking



NAVIGATION

Overview
Interior
Layout
Service
Location



We normally offer the chalet on a self catered basis in the winter. This includes:

- 🌸 Egyptian cotton linen and towels
- 🌸 L'Occitane toiletries
- 🌸 Representative service



However we can also offer the chalet with extra services such as:

- 🌸 Breakfast
- 🌸 Housekeeping
- 🌸 Private chef
- 🌸 Transfers
- 🌸 Driver



NAVIGATION

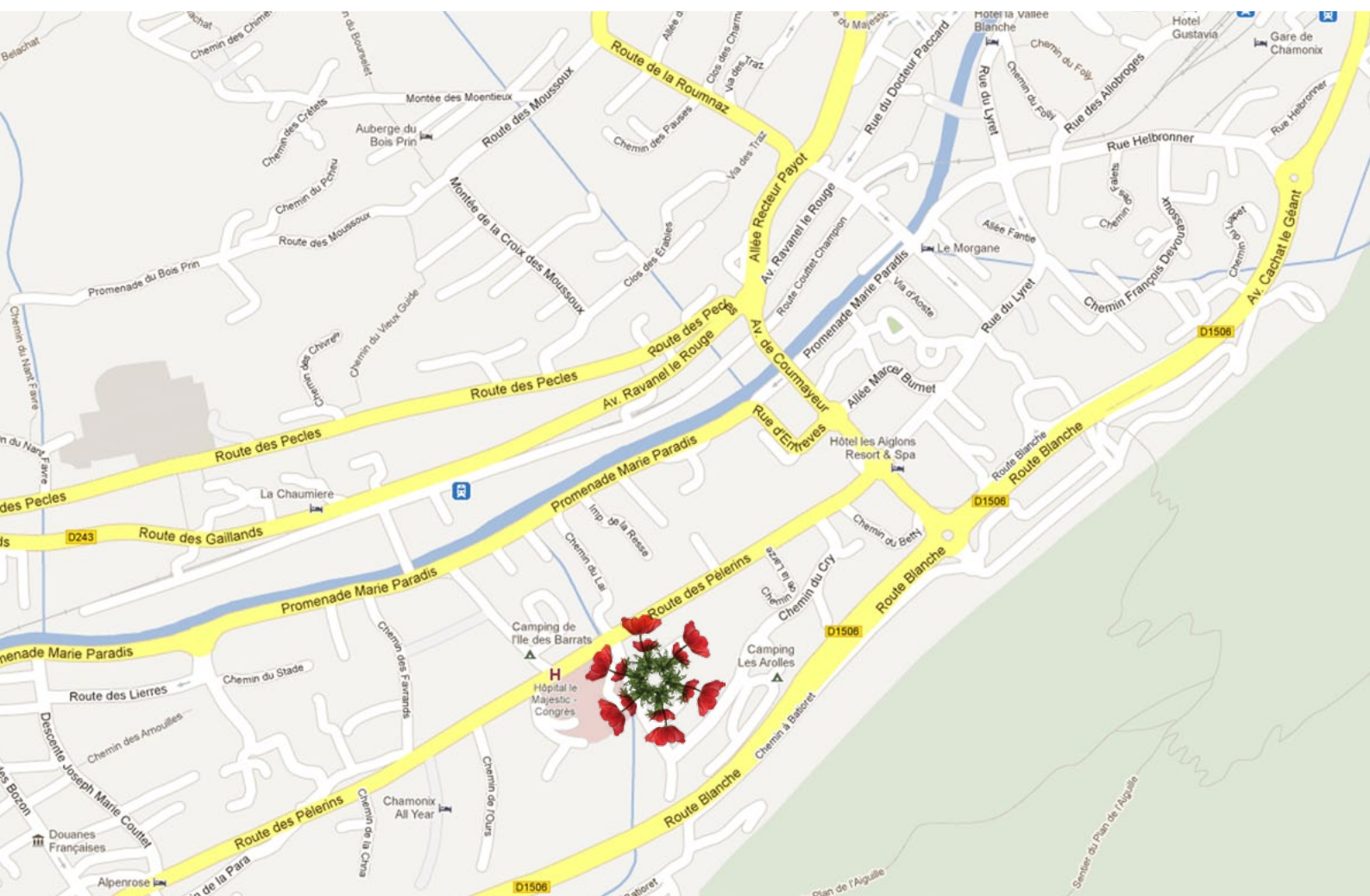
[Overview](#)

[Interior](#)

[Layout](#)

[Service](#)

[Location](#)



Collineige +44 (0)1483 579242 sales@collineige.com www.collineige.com skype: collineigesales.uk

The chalet is brilliantly located, just a 5 - 10 minute stroll to the centre of Chamonix and near fabulous restaurants. Situated in a quiet road there are wonderful views up to Mont Blanc, the Glacier des Bossons and across to Brévent on the other side of the valley.

NAVIGATION

- Overview
- Interior
- Layout
- Service
- Location