

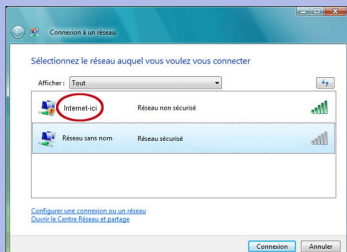


1 Connect your laptop to the Internet-ici wireless network



1 Turn on your computer and check your wireless device is on

2 Select the **internet-ici** network



3 Start your web browser

4 The connexion page should appear:



5 Put your code in the login path

6 Here you are !



If you still don't have the login page please go to the next page



2 Connect your laptop to the Internet-ici wireless network



A Network settings

For Windows XP

1 Click on **Start menu**, then **Control panel**. Click on **Switch to classic view** on the left

2 Go in **Network connexions**, right click on the **Wireless connexion** and click on **Proprieties**

3 In the enclose, select **Internet protocol TCP/IP** and click on **Proprieties**

4 Select **Automatic IP Address** and **Automatic DNS server address**



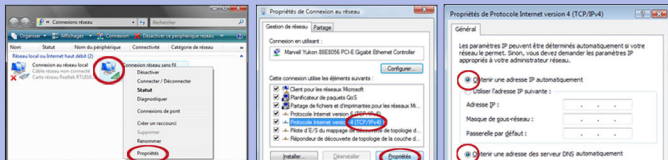
For Windows Vista

1 Click on **Start menu**, then **Control panel**. Click on **Switch to classic view** on the left

2 Go in **View network and status task** then click on **Manage network connexions**. Right click on the **Wireless network connexion** then click on **Proprieties**

3 In the enclose select **Internet protocol version 4** and click on **Proprieties**.

4 Select **Obtain an IP Address automatically** and **Obtain DNS server address automatically**



⚠ If you still don't have the login page please go to the next page



3 Connect your laptop to the Internet-Ici wireless network



B Browser settings

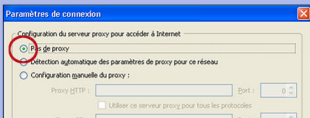
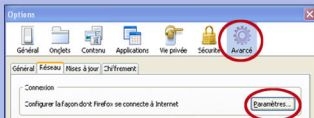


For Mozilla FireFox

1 In your browser menu, click on **Tools** then choose **Options**

2 Go on **Advance settings**, then on **Parameters** in the **Connexion** en-close.

3 In this new window, tick **Direct connexion to the internet**

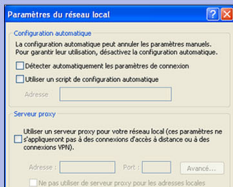
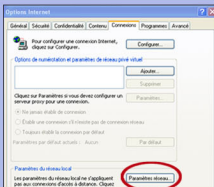


For Internet Explorer

1 In your **Browser menu**, click on **Tools** then choose **Internet Options**

2 In the **Connexion tab**, click on **Network settings**

3 Check that **nothing** is ticked



If you have a **firewall** or an **antivirus** activated, please, set it to be able to reach the Internet-Ici wireless network

⚠ If you still don't have the login page please go to the next page





4 Connect your laptop to the Internet-ici wireless network

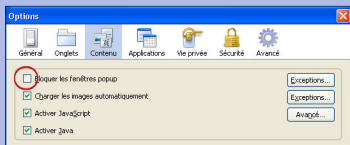
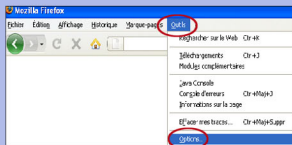


Accept Pop-up



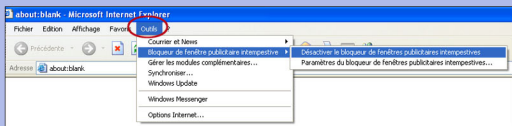
For Mozilla FireFox

In your **Browser menu** click on **Tools**, then on **Options**. In the **Contents** tab, unpick **Stop the pop-up windows**



For Internet Explorer

In your **Browser menu** click on **Tools**, then on **Pop-up blocker** and finally **Turn off pop-up blocker**



Electronic Mail settings

For Outlook Express

Click on **Tools** and choose **Accounts**. Select the **Mail** tab. Select your default account and click on **Properties**. In the **Advanced settings**, tick off **This server requires a secure connexion (SSL)**. Click on **Apply** and **OK**, and close the **Internet accounts** window

For Thunderbird

Click on **Tools** in the top menu bar and then **Account settings**...

Choose the **Outgoing servers** tab, select your default outgoing server then click on **Modify**. Tick **No** for **Use secure connexion** and tick off **Use name and password**