

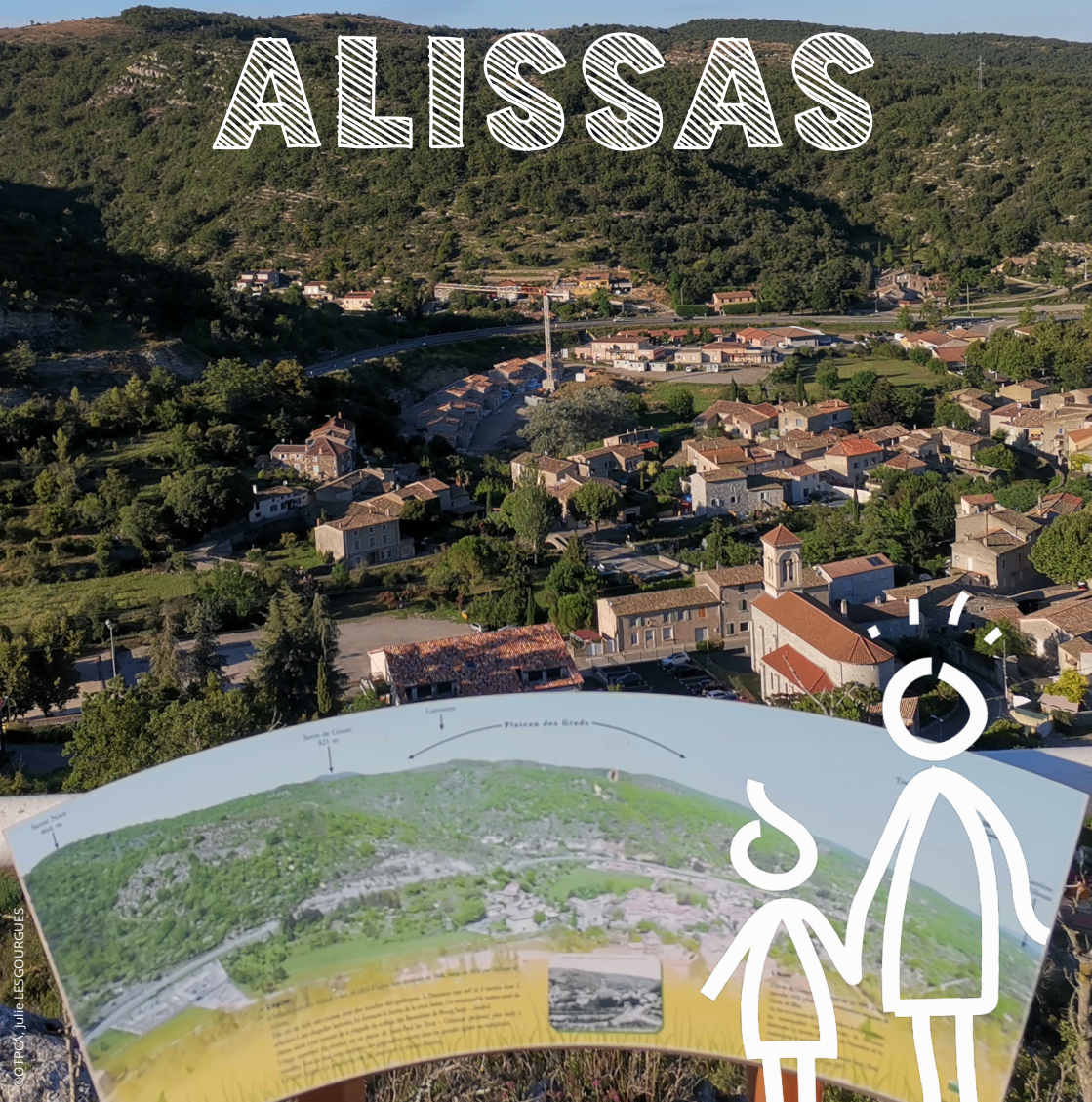


COEUR  
D'ARDÈCHE  
TOURIST OFFICE

TREASURE HUNT

LET'S DISCOVER...

ALISSAS



## STARTING POINT: TOWN HALL



**QUESTION 1: IN THE 17<sup>TH</sup> CENTURY, WHICH WINES WERE COMPARED TO THAT OF ALISSAS?**

- Cornas, Saint-Péray and Saint-Joseph
- Pinot noir d'Alsace, Riesling Blanc and Pinot Auxerrois
- Merlot Rosé Val de Loire, Sauvignon Blanc Val de Loire and Cabernet Franc Val de Loire

**QUESTION 2: WHAT IS SPECIAL ABOUT ALISSAS' GARDENS?**

- Vegetables grow by themselves
- The gardens are owned by the same person
- They each have a well

.....

**QUESTION 3: COMPLETE THE PICTURE BELOW.**



**QUESTION 4: IN THE PICTURE, YOU CAN SEE A GROOVE ON THE WALL. IT WAS USED TO PLACE A ..... . FIND OUT THE WORD WITH THE RIDDLE.**

My first is a farm animal making milk  
My second is the thick and soft hair that grows on some animals  
My third is a wall built across a river in order to stop the water flowing  
My whole is the piece of wood placed into this groove



**QUESTION 5: IN WHAT YEAR WAS THE WASHHOUSE BUILT?**

- 1872
- 1876
- 1880

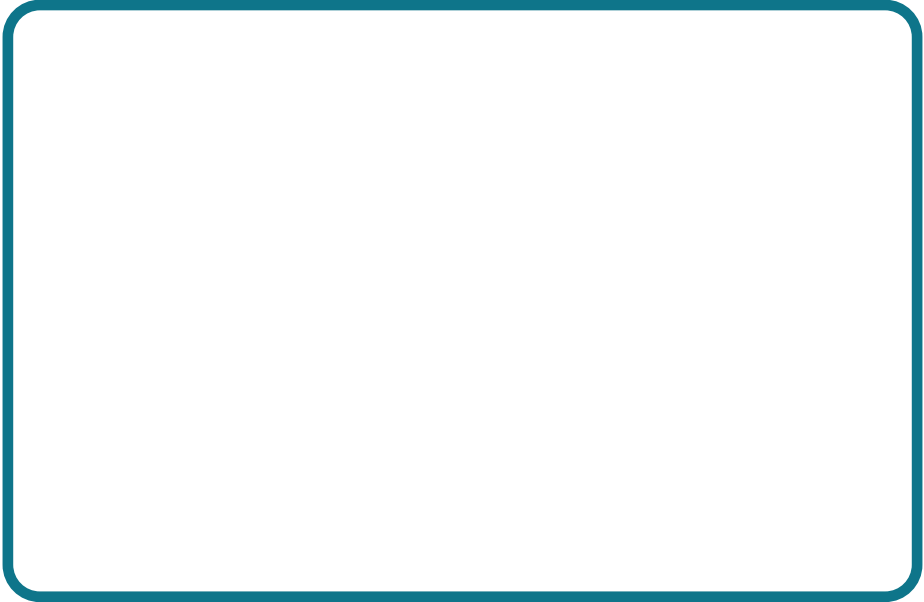


**QUESTION 6: FIND THIS MARKING IN THE "RUE ROYALE". WHAT COULD IT BE?**

.....  
.....



**QUESTION 7: DRAW ONE OF THE STALL IN THE "RUE ROYALE".**



**QUESTION 8: HOW MANY CULVERTS (SMALL SINGLE SPAN BRIDGES OVER A RIVER) ARE IN THE VILLAGE?**

1

3

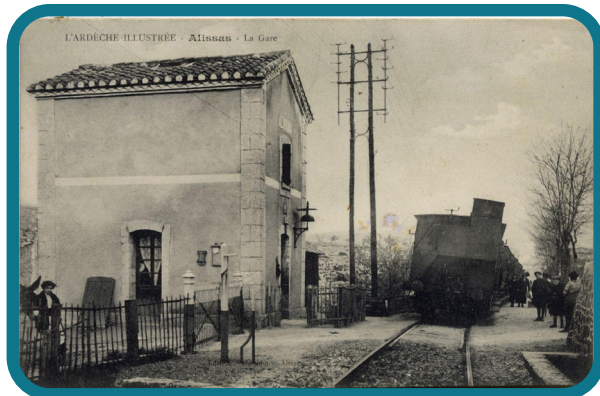
5

## ADDITIONAL CIRCUIT

*Circuit with little spots on the map.*

**QUESTION 9: AT THAT TIME, WHAT WAS THIS BUILDING USED FOR?**

---



**QUESTION 10: WHAT HAPPENED TO THE VIADUCT ON AUGUST 3, 1944?**

- It was enlarged
- Resistance fighters destroyed it to prevent the Germans from getting through
- The water rose up to the viaduct

**QUESTION 11: SOLVE THE RIDDLE TO FIND THE NAME OF THIS ANCIENT AREA, NOW IN RUINS: .....**

My first is the color of the elephant

My second is the name of a famous dog, a Rough Collie, and the main character of an old television series (1<sup>st</sup> syllable)

My whole is the name of this area left in ruins, at the top of Alissas

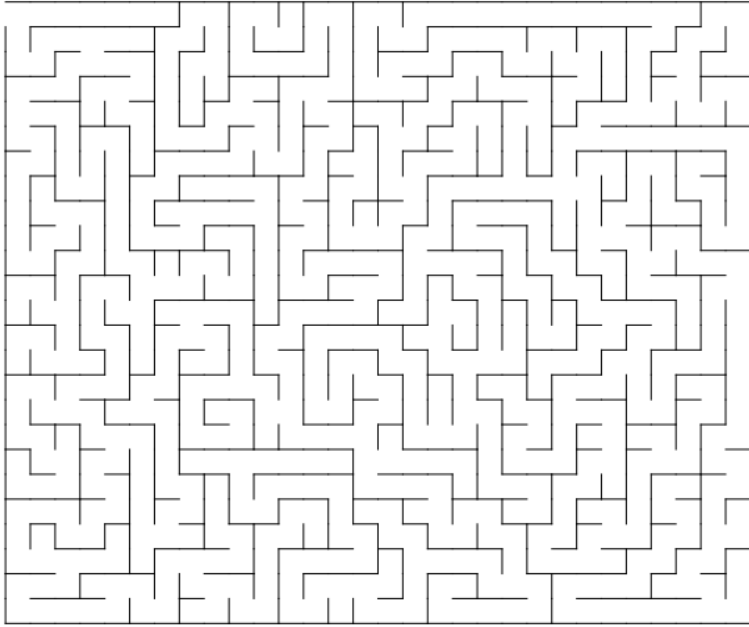


**QUESTION 12: WHAT IS THE LOCAL CULINARY SPECIALITY OF ALISSAS?**


*You can find a clue on a fresco along the circuit.*

- Chicory salad
- Tomato salad
- Sardine salad ("sarde")

**MAZE: BRING THE WATER FROM THE WELLS OF ALISSAS TO THE FOUNTAINS OF CHOMERAC, WHICH THEY SUPPLY.**



**WORD SEARCH PUZZLE: FIND THE FOLLOWING WORDS IN THE GRID BELOW. THE REMAINING LETTERS WILL SPELL THE NAME OF THE STATUE OVERLOOKING THE VILLAGE.**

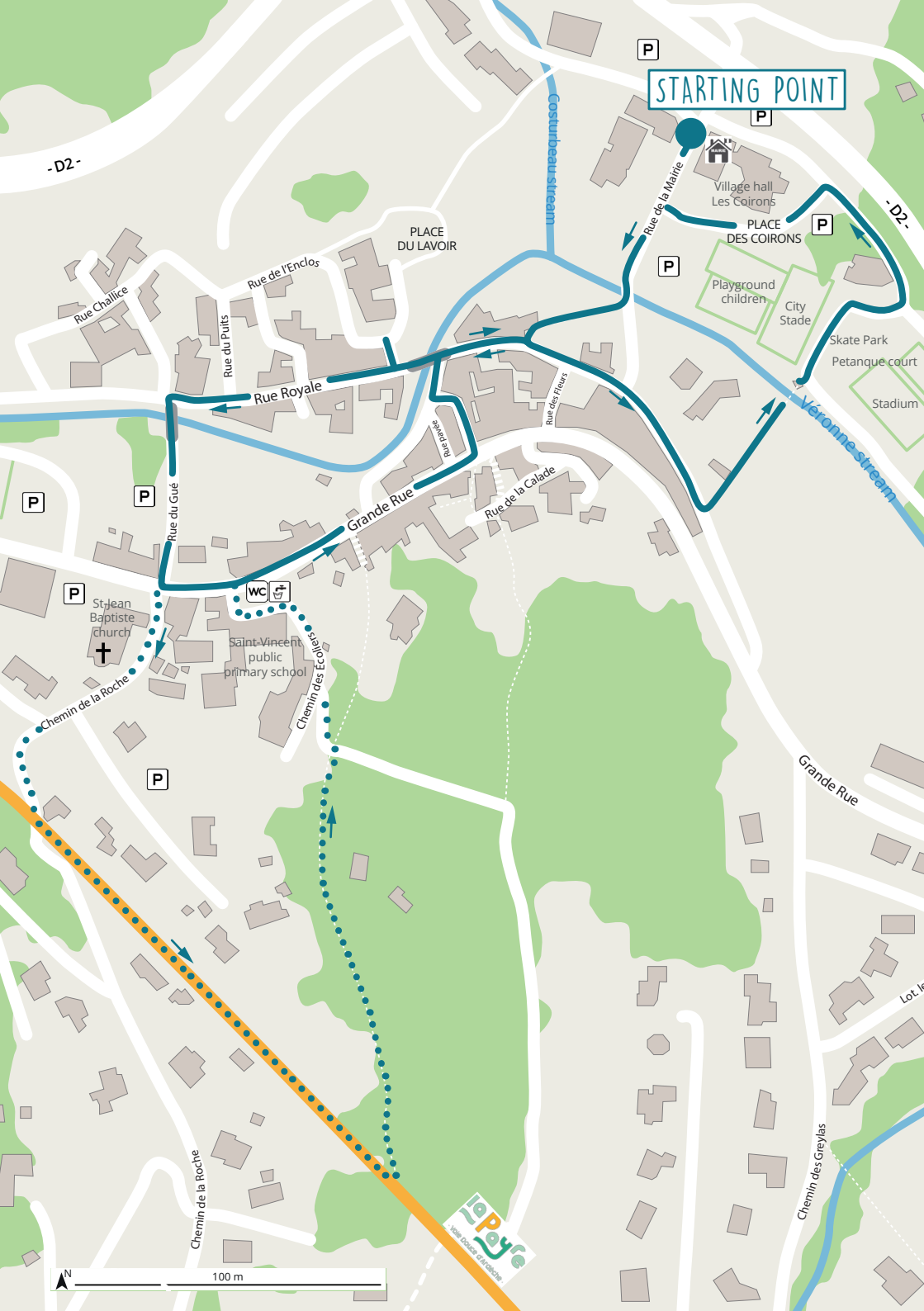
 *The words may be found from left to right, right to left, top to bottom and bottom to top. A little tip: some letters may be used several times.*

-----

N	S	A	R	D	I	N	E	S	E
T	R	E	V	L	U	C	S	S	C
L	L	A	T	S	O	V	U	T	N
H	T	R	W	W	E	I	O	C	A
C	D	A	A	I	M	N	H	U	T
R	E	D	T	N	E	E	H	D	S
U	S	R	E	E	O	Y	S	A	I
H	C	H	R	S	E	A	A	I	S
C	L	L	E	W	S	R	W	V	E
C	O	F	F	E	R	D	A	M	R

- CHURCH
- COFFERDAM
- CULVERT
- RESISTANCE
- SARDINES
- STALL
- VIADUCTS
- VINEYARD
- WASHHOUSE
- WATER
- WELL
- WINES

STARTING POINT



-D2-

-D2-

PLACE DU LAVOIR

PLACE DES COIRON

Rue Challice

Rue de l'Enclos

Rue du Puits

Rue Royale

Rue de la Mairie

Playground children

City Stade

Skate Park

Petanque court

Stadium

Costurbeau stream

Veronne stream

P

P

P

P

P

St-Jean Baptiste church

Saint-Vincent public primary school

WC

WC

Chemin de la Roche

Chemin des Ecoles

Rue de la Calade

Grande Rue

Grande Rue

P

Lot. F

Chemin des Greyllas

Chemin de la Roche



# HURRY BACK TO THE TOURIST OFFICE AND WE'LL CHECK YOUR ANSWERS. YOU MAY EVEN WIN A SMALL GIFT!

**If you have 9 or more correct answers:** 😊

You are a true adventurer! We can't hide anything from you!

**If you have between 6 and 8 correct answers:** 😊

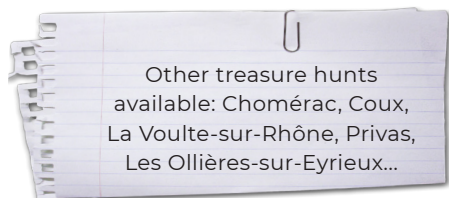
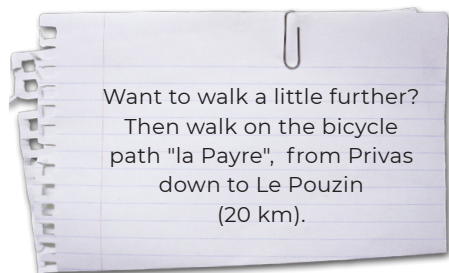
You are a part time adventurer! Remember the saying "less haste, more speed".

**If you get fewer than 5 correct answers:** 😞

Allissas still holds many secrets for you. Better luck next time!

## A few tips before you get going:

- Keep your eyes wide open as you walk around the village
- Listen to everyone in your group
- Read the signs carefully to get to know the streets and buildings around you



## CŒUR D'ARDÈCHE TOURIST OFFICE

**+33 (0)4 75 20 81 81**

accueil@coeur-ardeche.fr - www.coeur-ardeche.fr