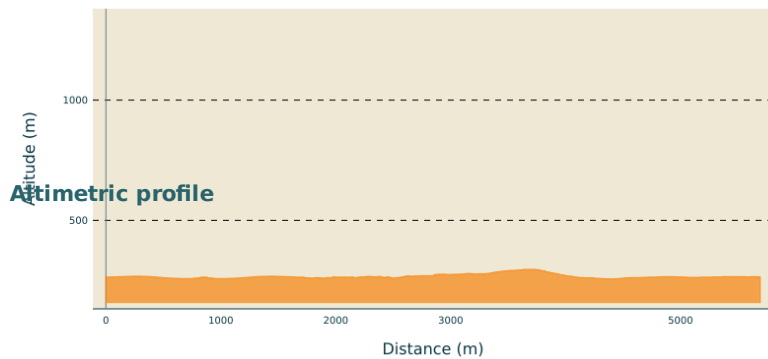


# The Joyeuse ledge

PAYS BEAUME DROBIE - LABLACHÈRE



Min elevation 256 m Max elevation 296 m

## Useful information

Practice : Hike

Duration : 2 h

Length : 5.7 km

Trek ascent : 95 m

Difficulty : Easy

Type : Loop

Themes : Fauna - Flora, Géologie, Patrimoine bâti

## Trek

**Departure** : La Perle d'Eau swimming pool, Lablachère

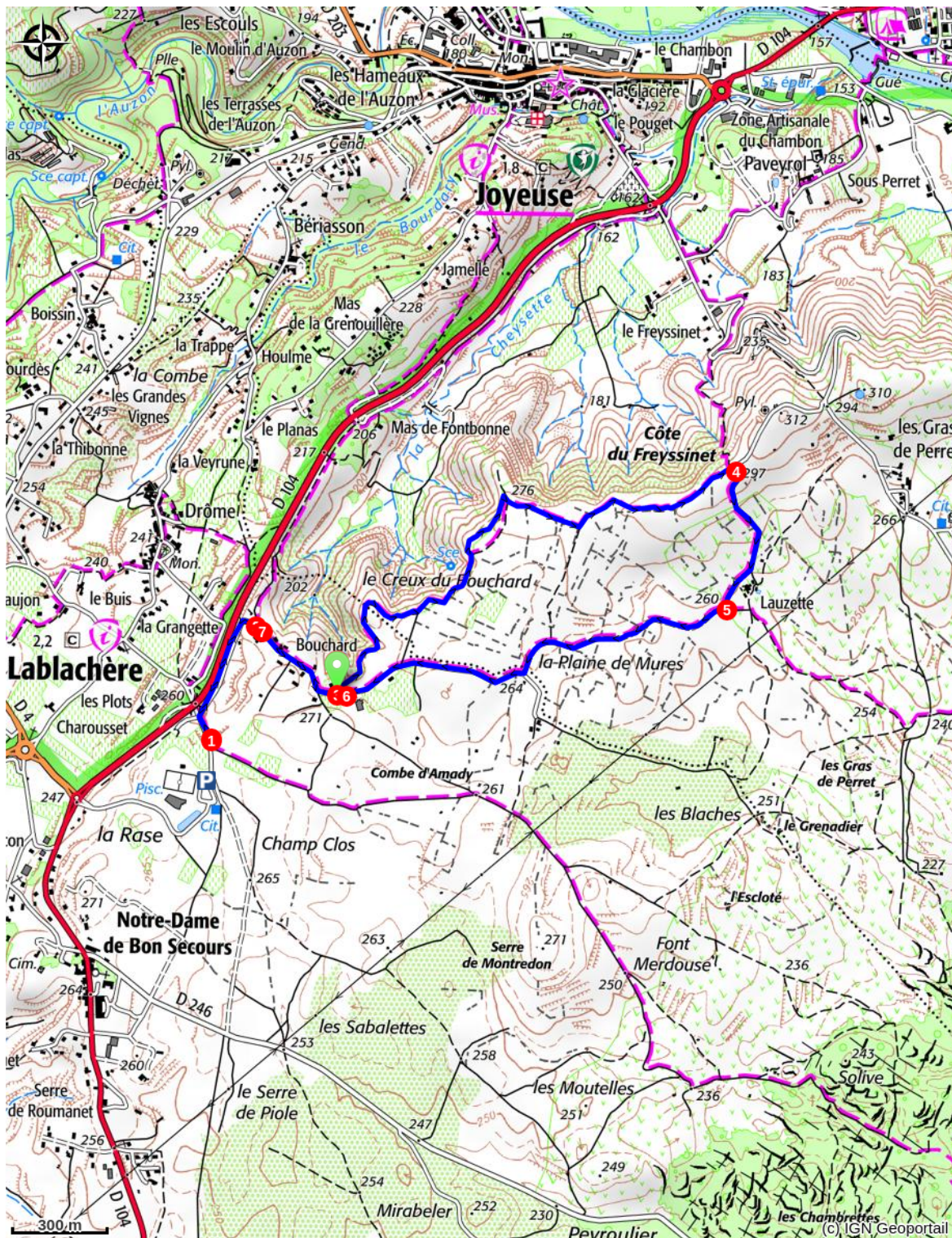
**Arrival** : La Perle d'Eau swimming pool, Lablachère

**Markings** : PR

Cities : 1. LABLACHÈRE 2. JOYEUSE

P - Take the road to La Grangette

1. **La Grangette** - Follow Joyeuse 2,9 km. Continue on the road alongside the bypass until you reach Le Bouchard
2. **Le Bouchard** - Follow St-Alban-Auriolles 9,5 km. Continue on this road until you get to La Plaine des Mûres
3. **La Plaine des Mûres** - Follow Joyeuse 4 km. Follow the trail overlooking Joyeuse until you get to Côte du Freyssinet.
4. **La Côte du Freyssinet** - Follow St-Alban-Auriolles 8,2 km. Keep on this track that takes you to Lauzette
5. **Lauzette** - Follow Lablachère 4,4 km. Continue on this track and then the road until you reach La Plaine de Mûres
6. **La Plaine de Mûres** - Follow Lablachère 3 km. Follow the road via Le Bouchard and then La Grangette until you get back to the start point.



## How to come ?

### Access

From Les Vans (12 km) or Joyeuse (4km), follow Lablachère then Aquatic Complex.

### Advised parking

La Perle d'Eau swimming pool, Lablachère

## Information desks

### Office de tourisme des Cévennes d'Ardèche

[contact@cevennes-ardeche.com](mailto:contact@cevennes-ardeche.com)

<https://www.cevennes-ardeche.com/>