



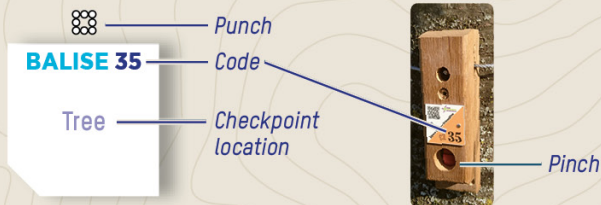
LE BOURG D'OISANS ORIENTEERING COURSE MTB & GRAVEL

ALPES ISÈRE SOURCE DE HAUTEUR



HOW DOES IT WORK?

- 1- Position your map and find the starting point.
- 2- Choose an itinerary to go from the starting point to the first checkpoint.



- 3- Don't forget to punch.
- 4- Answer the question on the document.
- 5- Find the next checkpoint while following the order.

RECOMMENDATIONS

- It is the participants' responsibility to gauge their ability to take part in this activity.
- Please respect private property, designated parking area and local regulations.
- Make sure to pick up your waste; do not leave anything behind.
- Check the weather forecast and your equipment before engaging in this activity.
- You share this area with other users, be considerate of others.
- RESCUE:** In case of an emergency, call 112 and give the casualty's exact location.

1 LA VILLE NOIRE

This district is one of the oldest in Bourg d'Oisans. Why is it called the "Black Town"?

- A It was built using dark materials, such as slate.
- B The area was once home to many walnut trees.
- C It burnt down in a huge fire at the end of the 18th century.

2 LA FARE WATER CATCHMENT

In Saint Claude, a water catchment supplies drinking water to Bourg d'Oisans. The site is secured by a wire fence. What's the official name for this restricted zone?

- A A close protection zone
- B An immediate protection zone
- C An exclusive protection zone

3 THE SOURCE OF LA RIVE

La Rive, the river that runs through Bourg-d'Oisans, originates here. But what exactly is a spring?

- A The place where water emerges from the earth, marking the beginning of a watercourse.
- B The place where the water in a stream is purest.
- C The place where water can be collected and bottled for sale.

4 LAKE BUCLET

Lake Buclet, a popular spot for walking and fishing, spans 13 hectares, reaches a depth of 17 meters and is fed by the waters of the Vénéon river. But what's the geological origin of this lake?

- A It's a remnant from the Ice Age.
- B It's a vestige of the ancient Lake Saint Laurent, which once covered the Bourg d'Oisans plain.
- C It was originally a gravel pit.

5 LA PISSE WATERFALL

In spring and early summer, La Pisse waterfall is at its most impressive, flowing from meltwater, rain, and mountain streams, and resembling a bridal veil. In late summer, the flow dwindles. What is the term for the lowest flow of a river?

- A Distributary
- B Ebb
- C Low water

6 OISANS PEDLARS

Like migratory birds, the Oisans pedlars passed through Bourg d'Oisans every autumn and spring, marking the beginning and end of the winter season. One of the pedlars from Venosc, called Pierre Veyrat, went on to have an extraordinary life. What happened?

- A While traversing the Oisans paths, he stumbled upon a silver deposit that made his fortune.
- B The trade in Alpine flower bulbs became so successful in the 19th century that he exported them as far as Russia and was even the florist at the court of the Tsar.

7 LAKE BUCLET CREATES A SCENE

Lake Buclet has served as a picturesque backdrop for several film productions. Which Gilles Lellouche film featured several scenes shot at this location?

Indice : le titre évoque une activité interdite à Buclet.

- A Le Grand Bain (Sink or Swim)
- B Camping
- C Baignade nocturne (Night Swim)

8 THE PIC CLAPIER DU PEYRON

The Pic du Clapiér du Peyron is a Oisans peak that attracts mountaineers, hikers and ski tourers alike. How high is it?

- A 2,914 m
- B 3,169 m
- C 3,857 m

9 AXINITE

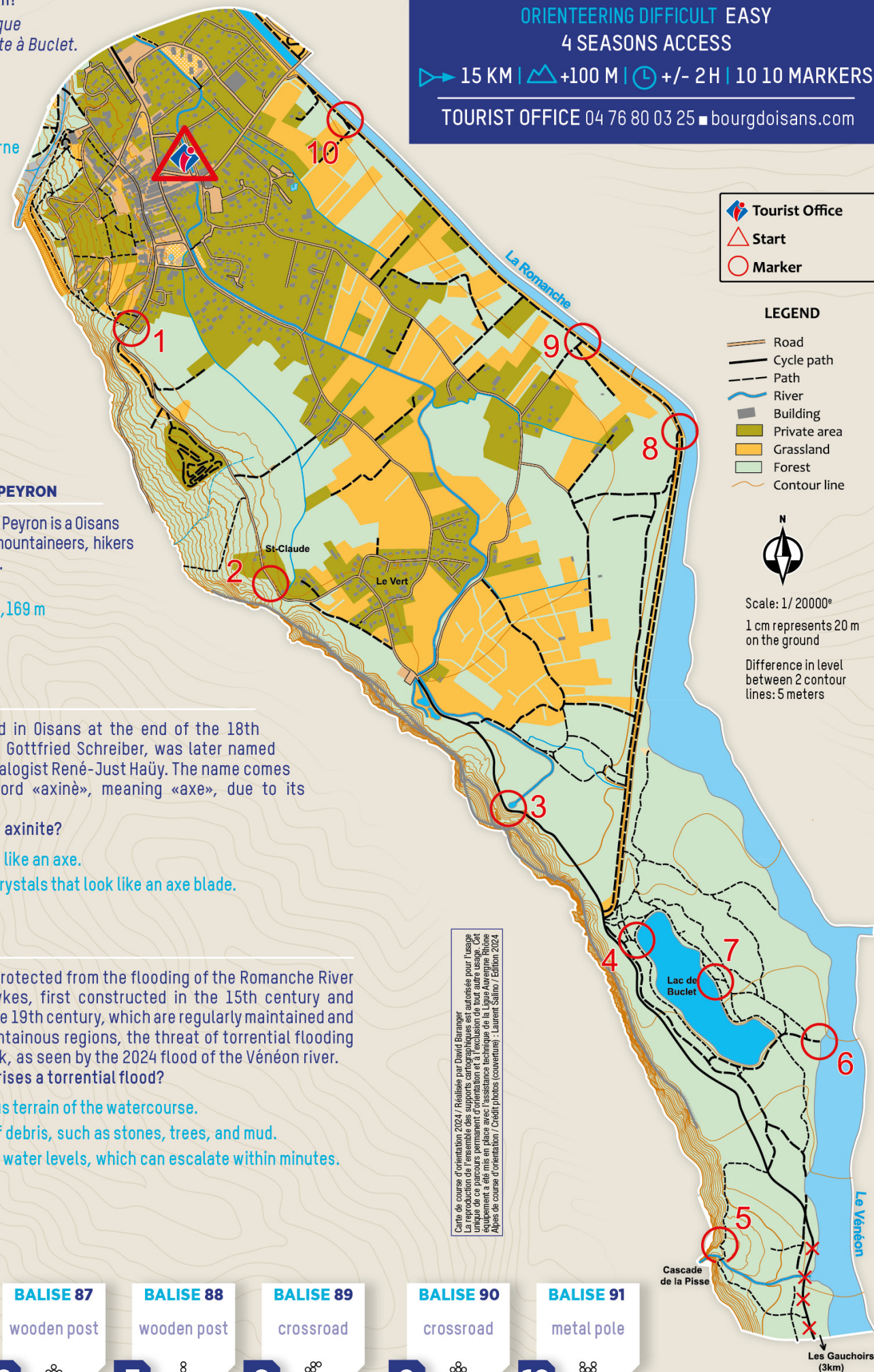
Axinite, discovered in Oisans at the end of the 18th century by Johann Gottfried Schreiber, was later named by renowned mineralogist René-Just Haüy. The name comes from the Greek word «axinè», meaning «axe», due to its distinctive shape. But what exactly is axinite?

- A A flower shaped like an axe.
- B A mineral with crystals that look like an axe blade.

10 DYKES

Bourg d'Oisans is protected from the flooding of the Romanche River by a system of dykes, first constructed in the 15th century and expanded in the late 19th century, which are regularly maintained and reinforced. In mountainous regions, the threat of torrential flooding is a well-known risk, as seen by the 2024 flood of the Vénéon river. But what characterises a torrential flood?

- A The mountainous terrain of the watercourse.
- B The transport of debris, such as stones, trees, and mud.
- C The rapid rise in water levels, which can escalate within minutes.



Carte de course d'orientation 2024 / Réalisée par David Baranger
La reproduction de cette carte est autorisée à condition qu'elle soit utilisée pour l'usage
équipement à été mis en place avec l'assistance technique de la Ligue Aurignac Rhône
Alpes de course d'orientation / Crédit photos (couverture) : Laurent Salino / Edition 2024

BALISE 81
wooden post

BALISE 82
wooden post

BALISE 83
wooden post

BALISE 84
tree stump

BALISE 86
tree

BALISE 87
wooden post

BALISE 88
wooden post

BALISE 89
crossroad

BALISE 90
crossroad

BALISE 91
metal pole

1

88

2

88

3

88

4

88

5

88

6

88

7

88

8

88

9

88

10

88

