

Chemin des Gardes via Le Seuil

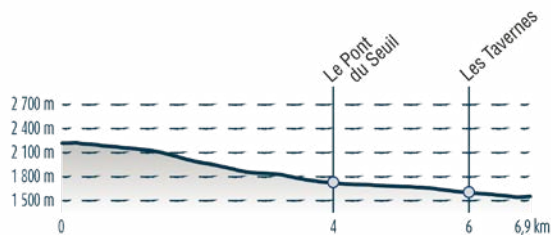


Access to start point

Valfréjus, Top of the Arrondaz cable car.
Start point at the cable car of Le Charmaix,
Rue des Bettets.



Scan
and follow
the route
with your
favourite app



A complete change of scene!



In the summer, you can effortlessly get up the mountain by cable car to explore the Arrondaz plateau. Off-season, you must rely on your legs to power up to the top. Welcome to the high-altitude plateaux of Valfréjus. What a complete change of scene! One thing's for sure, you won't want to leave it at that...

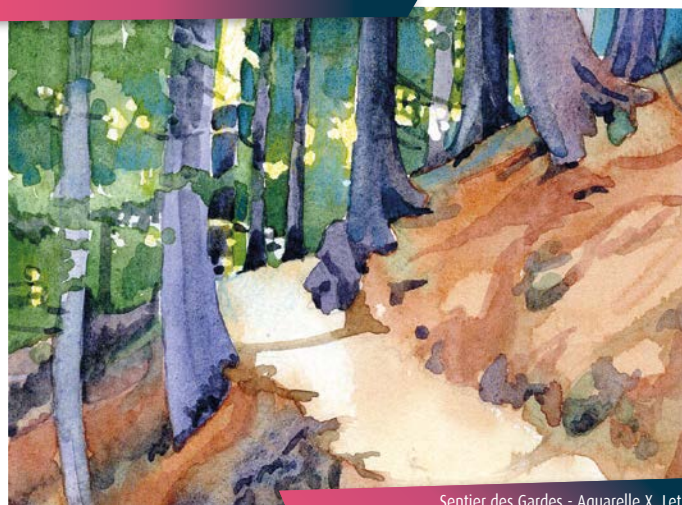


Along the way

At the foot of the prestigious peaks of Valfréjus, get ready to succumb to the many charms of the high mountains. Punta Bagna, Pointe de Fréjus, Pointe d'Arrondaz... here they all are, watching over you.

When you arrive on the plateau, you'll be greeted by herds of animals, traditional chalets, and a clear sky: a truly captivating sight that'll make you forget all about the valley below. In the silence of the alpine meadows, broken only by the bells of the herds and the murmur of the Grand Vallon torrent, stop at the Arrondaz chalets to bask in the tranquillity of this protected area. At this time of year, it's hard to imagine this area blanketed in snow...

The way back to the resort involves a descent 660 metres, take care on the way down. It'll be a challenge for your legs and ankles if you're not used to skipping along on rocky trails. Go at your own pace and breathe in the fresh air.



Sentier des Gardes - Aquarelle X. Lett