



Did you answer all the questions?
Find the password (*in French*)
and get a present at the Tourist Offices!

PASSWORD

**CHAMROUSSE'S
TOURIST OFFICES**

1650 42 Place Belledonne

1750 Avenue du Père Tasse

T.: +33 (0)4 76 89 92 65

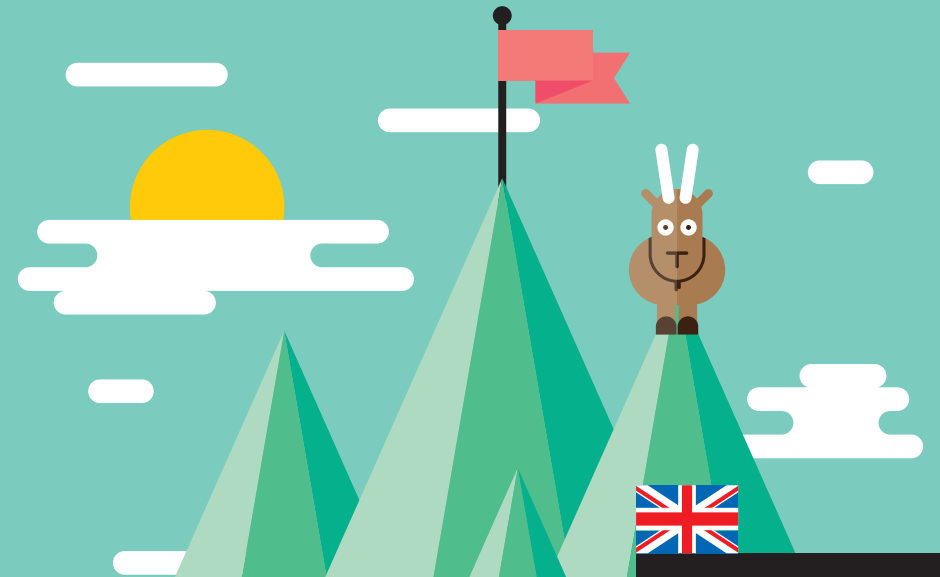
info@chamrousse.com

www.chamrousse.com



PARCOURS DU PETIT MONTAGNARD

LITTLE MOUNTAIN DWELLER TRACK



**TRACK GAME
BOOKLET**

CHAMROUSSE
ALPES-FRANCE 1700

WELCOME TO CHAMROUSSE!

Through this quizz, discover the mountain environment of Chamrousse (animals, flora and environment) as a family, travelling 3 km along the path between the 1650 and 1750 resort poles (duration = 1h/1h30).

To do this, answer at least one of the 2 questions you will find on the panels along the way (■ = easy ■ = more difficult) and note the mystery letters that will help you to find the password (in French) at the end of the game!

2 possible directions:

- > Departure in front of the Town Hall [resort map 7]
- > Departure from the Environment House [resort map 14]

1st PANEL

Question ■

Question ■

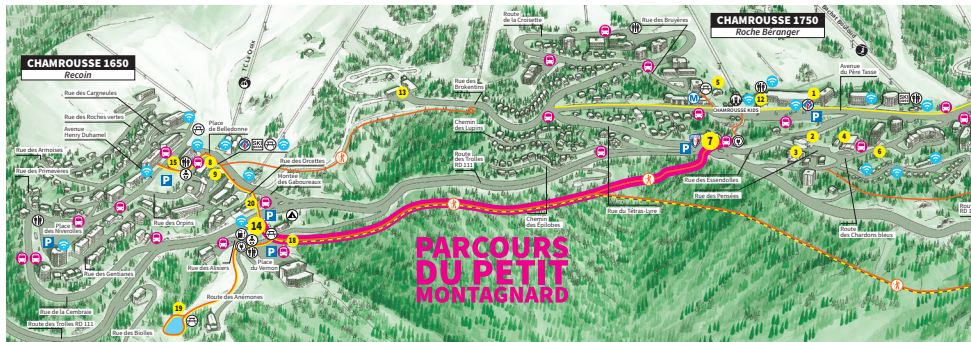
MYSTERY LETTER
...

2nd PANEL

Question ■

Question ■

MYSTERY LETTER
...



3rd PANEL

Question ■

Question ■

MYSTERY LETTER
...

4th PANEL

Question ■

Question ■

MYSTERY LETTER
...

5th PANEL

Question ■

Question ■

MYSTERY LETTER
...

6th PANEL

Question ■

Question ■

MYSTERY LETTER
...

7th PANEL

Question ■

Question ■

MYSTERY LETTER
...

8th PANEL

Question ■

Question ■

MYSTERY LETTER
...

9th PANEL

Question ■

Question ■

MYSTERY LETTER
...

10th PANEL

Question ■

Question ■

MYSTERY LETTER
...