

ORELLE LES 3 VALLÉES

Winter 2024-2025



WINTER 2024/2025

Discover OUR ACTIVITIES

Throughout your mountain stay, our teams offer you unique moments: activities for everyone, snake gliss rides, après-ski in an igloo, excursions to Turin, fireworks, and many more surprises.



Find our activities program here.



Orelle
LES 3 VALLÉES



BIENVENUE!

If you're seeking a place where peace and simplicity take center stage, welcome to Orelle!

Nestled in the heart of the majestic Maurienne Valley, at the crossroads of iconic alpine passes and steps from Vanoise National Park, Orelle is a village of ten charming hamlets. Here, every stroll reveals something new. Whether with family or friends, uncover historic washhouses, communal ovens, two beautiful churches, and as many chapels as there are hamlets... all set amid stone houses closely tucked together, preserving a rich, unspoiled heritage.

Orelle is more than a village; it's a journey through time. Evolving from an agricultural hub to an industrial village, it now invites those who savor tranquility. Open your eyes wide and take in the beauty of winding alleys and the warm hospitality of its residents. Every encounter tells a story, and each story is an unforgettable memory to cherish.



FRANCOZ

Where Everything Happens!

Welcome to the lively heart of Orelle! Francoz is the place where energy is at its peak. Here, you'll find the departure point for the Orelle Gondola, a souvenir shop, the ski lift ticket office, the Bar des 4 Vallées, and the Tourist Office. This hamlet buzzes with excitement and good vibes—a true hub of activity for all ages!

LE CHEF-LIEU

The Administrative Heart of Orelle

As its name suggests, this is where you'll find the Town Hall, along with the school and library. The Chef-Lieu also proudly houses the baroque Saint-Maurice Church, standing beside the Nobles d'Albert d'Orelle square. Discover "Chez la Tante," a small ecomuseum recreating a room from the past, which Aimé and Victorine Traversaz open upon request.

ORELETTE

A Sunny Balcony Overlooking the Valley

At an altitude of 1,170 meters, Orellette enjoys year-round sunshine and offers breathtaking views of the valley and the majestic Aiguilles d'Arves. This hamlet, once filled with the laughter of children from Haute-Marne attending summer camp, remains a place rich in memories for those who discovered the joys of the mountains here.

LA FUSINE

The Mysterious Hamlet

With the air of a forgotten hamlet, La Fusine, nestled between Le Noiray and the Chef-Lieu, hides many secrets. Its stone buildings still house a few fortunate residents, living witnesses to a time when mountain life followed an unchanging rhythm. Its chapel, Saint Francis of Assisi, is a must-see for local pilgrims.

Here, you'll also discover a hidden waterfall, a true natural gem that adds a touch of magic to this quiet, secretive place.

BONVILLARD

A Jewel of Tradition

At an altitude of 1,180 meters, Bonvillard reveals an exceptional architectural heritage to those who take the time to wander through its streets. Surrounded by forests, this hamlet is the perfect starting point for many hikes, whether on foot or snowshoes. Its church, Sainte Marguerite, watches over the hamlet, adding a sacred dimension to this peaceful corner, where every stone tells a story.

LE NOIRAY

Between Tradition and Nature

Le Noiray enchants with its perfect blend of traditional architecture and wooden buildings. Stroll through its Saint-Sébastien chapel, its oratory, and its washhouse, while enjoying the sunshine that bathes this small hamlet. The fertile lands of Le Noiray are just as remarkable: around 150 bottles of "La Demoiselle du Noiray" wine are produced here every year. A tasting not to be missed for lovers of authentic flavors!

LE TEPPEY

A Corner of Preserved Nature

Small and discreet, Le Teppey is a hamlet that exudes tranquility with just a few houses. The luckiest visitors can enjoy a peaceful stay in the cozy Gîtes de la Biche and du Cerf. To reach it, the adventure begins with a steep cobblestone staircase, immersing you immediately in the authenticity of mountain life.

LE POUCKET

An Unknown Haven of Peace

Le Poucet is a true sanctuary of calm and serenity. Its Saint-Joseph chapel, communal oven, and narrow streets invite contemplation. It is the most discreet of Orelle's hamlets, a well-kept secret offering a true escape from the beaten path.



Bonvillard



Chef Lieu



La Fusine



Le Noiray

CERCHE ET TROUVE !
 LE BOUGUETIN À LUNETTES
 LA DANÉVSE
 LA MARROTTE
 L'ESQUIMAU
 LE CHIEN SÉCOURNISTE
 L'HELICOPTÈRE

SEEK AND FIND!
 THE SPECTACLED IBEX
 THE SNOW GROOMER
 THE MARROT THE
 ESKIMO THE RESCUE
 DOG THE HELICOPTER



CERCA E TROVA!
 LO STAMBECCO CON GLI OCCHIALI
 IL BATTIPISTA
 LA MARROTTA
 L'ESQUIMESE
 IL CANE DA SOCCORSO
 L'ELICOTTERO

- AGENCE POSTALE / Post Office / Posta
- FORAITS / Ski pass
- ESF / Ski school / Scuola di sci
- ORELLE SPORTS 3000
- SOUVENIRS
- BAR DES 4 VALLÉES

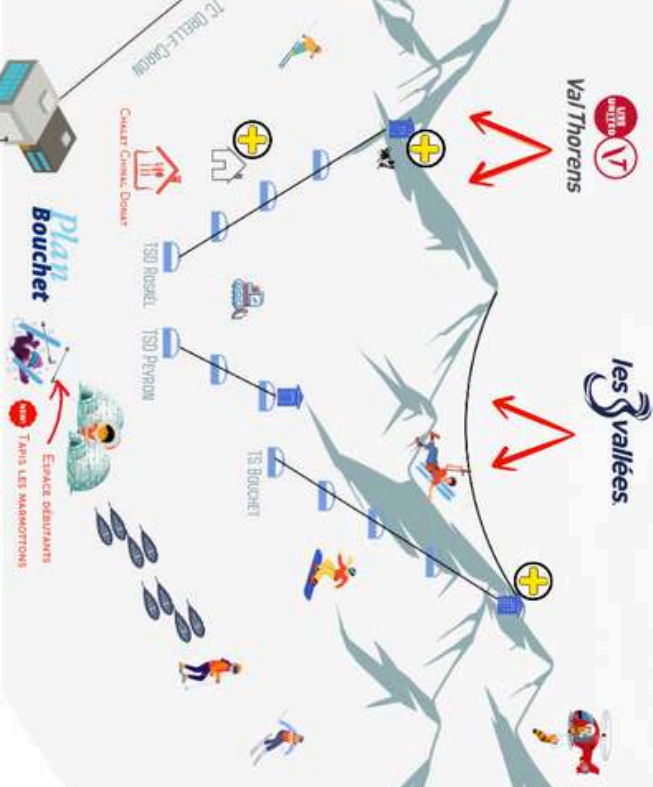


FRANCOZ

vers ST-MICHEL-de-MAURIENNE (6 km)



vers MODANE (10 km)



CARON
3200

Vai Thorens

les 3 vallées

LE HANNEAU DES EAUX D'ORELLE
 Superette Orelle's Shop
 Restaurant du Hanneau des Eaux

Plan Bouchet
 Espace déjeuners
 dans les MARROTTONS

WINTER 2024/2025

Have fun

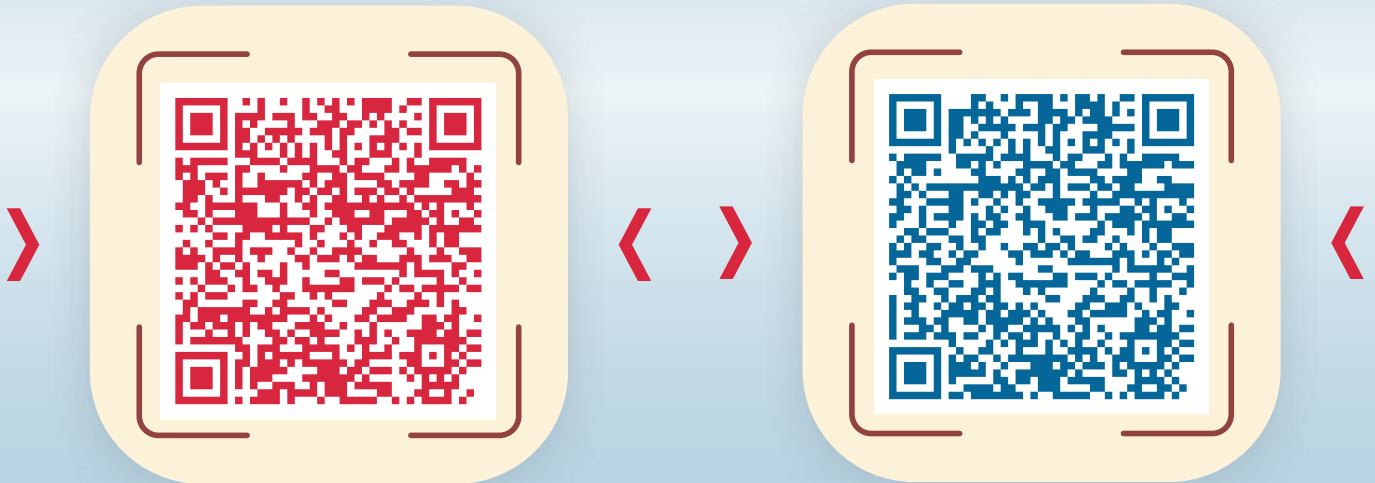
Winter Sports and
Snow Activities



Orelle
LES 3 VALLÉES

● ●

DOWNLOAD THE PASS PRICES



**All rates:
SKI PASSES**

**All rates:
PEDESTRIAN PASSES**

ESPRIT LIBRE

DEPUIS 1996

Orelle
LES 3 VALLÉES

The Ski Area



Orelle
LES 3 VALLÉES



Whether you're a skier or a snowboarder, a few simple rules are enough to avoid turning the slopes into a bowling alley! Respect others, control your speed, and follow the signs, and everyone will have a great day.

In short, slow down, watch where you're going, and don't block the middle of the slope. Easy, right? So enjoy, glide, but stay smart!

Safety Rules

1.

RESPECT FOR OTHERS

Do not endanger anyone or cause harm

2.

SPEED CONTROL

Adapt your speed to your abilities, the conditions, and the density of skiers

3.

CONTROL OF DIRECTION

The skier above must choose a safe path for those below.

4.

OVERTAKING

Pass widely, whether on the right or the left.

5.

ENTERING THE SLOPE

Make sure it is safe to enter the slope or to turn.

6.

STATIONNEMENT

Avoid stopping in narrow areas or places with poor visibility

7.

RESPECT THE MARKING

Always follow the markings and signs.



IF YOU NEED ASSISTANCE OR ARE UNSURE, DON'T HESITATE TO CONTACT PROFESSIONALS.

Rescue patrollers are present on the slopes or at the first aid stations.

#VasyMollo
Garde tes distances de sécurité !

In case of an accident, call:
+33 4 79 56 88 01

Off-ski Activities

Snake-Gliss



©Clément_Ducruet_OT Val Thorens

On the program: ski down the Croix d'Antides slope, with an ESF instructor, whether with family or friends.
From 10 years old.

From 21/12/2024 to 07/02/2025, every Wednesday and Thursday from 3:45 PM to 4:15 PM.
From 08/02 to 04/05/2025, every Wednesday and Thursday from 4:15 PM to 4:45 PM.

📍 Plan Bouchet
73140 Orelle
+33 4 79 56 87 22
contact@orelletourisme.net

Après-Ski in an igloo !



©OT ORELLE

Want to extend the magic after the slopes close? Treat yourself to a unique experience in an igloo and admire the "Golden Hour" at 2,350 meters of altitude. A friendly and unforgettable moment awaits you!
From 21/12/2024 to 07/02/2025, every Tuesday from 4:15 PM to 5:30 PM.
From 08/02 to 04/05/2025, every Tuesday from 4:30 PM to 6:00 PM.
Cancelled in case of bad weather.

📍 Arrival of the Gondola
Plan Bouchet 73140 Orelle
+33 4 79 56 87 22
contact@orelletourisme.net

The Zip Line



©OT ORELLE

A 1,300-meter glide, 1 minute 45 seconds of pure pleasure with a breathtaking panorama, from the highest point of the 3 Vallées at 3,230 meters, at the summit of the Bouchet Chairlift.
From 8 years old.
Flat rate: **56 euros**.
Payment on site.
No advance reservations possible.
Credit cards accepted.
Subject to favorable weather conditions.

From 21/12/2024 to 07/02/2025, every day from 10:00 AM to 4:15 PM.
From 08/02 to 04/05/2025, every day from 10:00 AM to 4:45 PM.

Nordic ski trail



©OTOrelle

The highest Nordic ski trail in the 3 Vallées is in Orelle!!! Located at 2,350 meters, at the arrival of the Orelle Gondola, on the Plateau de la Tourbière.
From 3 years old.

From 21/12/2024 to 04/05/2025, from 9:00 AM to 4:00 PM.
Subject to weather conditions.

📍 Plan Bouchet 73140 Orelle
+33 4 79 56 87 22
contact@orelletourisme.net

Boardercross



©Maarten Duineve

With its bridge, small bumps, and gentle curves, the Boardercross track is perfect for skiers at a blue level. Accessible via the Croix d'Antide slope. Free of charge. Ski pass required.

From 21/12/2024 to 04/05/2025.

📍 Croix d'Antide 73140 Orelle
+33 4 79 56 88 01
info@orelle.net

📍 Arrival of the Bouchet Chairlift
73140 Orelle
+33 4 79 56 88 01
info@orelle.net

VIP First Tracks: Discover the role of a ski patroller



©Nicolas_Lops

VIP Morning: Early Ski Opening, First Tracks, Discover the Role of a Ski Patroller, and Breakfast in the Rescue Hut at 3,000m, or, depending on the weather, in the Igloo Village.

12 euros + valid ski pass.

Subject to favorable weather conditions. Rescheduled in case of bad weather.

From 21/12/2024 to 04/05/2025, every Friday from 8:15 AM to 9:30 AM.

📍 Place de la télécabine
Francoz 73140 Orelle
+33 4 79 56 87 22
contact@orelletourisme.net

Igloo Village



©OT_Orelle

A Family Area Accessible at the Arrival of the Gondola. Several sledding tracks, including one in a tunnel, igloos, and a picnic area to enjoy great moments with your family. The children will be thrilled, and so will you!
From 3 years old.

Access to the village is free. A minimum pedestrian pass is required to access Plan Bouchet. Subject to snow conditions.

From 21/12/2024 to 07/02/2025, every day from 9:00 AM to 4:30 PM.
From 08/02 to 04/05/2025, every day from 9:00 AM to 5:00 PM.

📍 Plan Bouchet 73140 Orelle
+33 4 79 56 88 01
info@orelle.net

Snowshoe Trails



©OT_Orelle

Several options are available to you:

- An altitude trail at the arrival of the gondola.
- Trails through the hamlets of Orelle.

Free of charge. For the altitude trail: a minimum pedestrian pass is required.

From 21/12/2024 to 04/05/2025. Subject to weather and snow conditions.

📍 Plan Bouchet 73140 Orelle
+33 4 79 56 87 22
contact@orelletourisme.net




—

Wellness Area

Massage and Beauty Treatments



A relaxing break during your stay!
Enjoy a pure moment of well-being at the Hameau des Eaux d'Orelle..



Treatments available daily from 30/11/2024 to 02/05/2025,
except Saturdays and Sundays.

SPA OF HAMEAU DES EAUX D'ORELLE
Hameau des Eaux d'Orelle
73140 Orelle
+33 9 64 41 21 77
residence.orelle.3vallees@gmail.com

WINTER 2024/2025

Shops

Dining and Services



Orelle
LES 3 VALLÉES

Shops and services : ski

Ecole de ski d'Orelle



©ESF Orelle

The ESF instructors of Orelle offer group lessons (ski) or private lessons (ski, snowboard) for all levels starting from 4 years old.
Book your lessons online today!

The office is located at the gondola station. Meeting point on the ski area (Plan Bouchet).

Group lessons:
Week (5 sessions of 1h30): 180€

Private lessons:
1h: 55€ (+ 20€ per additional person)
1h30: 83€ (+ 25€ per additional person)
2h: 110€ (+ 30€ per additional person)

From 23/11/2024 to 04/05/2025, from 8:30 AM to 5:30 PM.

📍 Francoz 73140 Orelle
+33 4 79 56 74 11
contact@esf-orelle.fr
www.esf-orelle.fr

Orelle Hors-Piste By ESF



©ESF

For an unforgettable ski session on the best off-piste spots of the 3 Vallées!

Half-day (9:00 AM - 1:30 PM): 360 euros
Full day (9:00 AM - 4:30 PM): 450 euros

Safety equipment (avalanche beacon, shovel, probe, backpack) included.
Groups limited to 6 people for quality and safety reasons.

From 23/11/2024 to 04/05/2025, from 8:30 AM to 5:30 PM.

📍 Francoz 73140 Orelle
+33 4 79 56 74 11
contact@esf-orelle.fr
www.esf-orelle.fr

Société des Téléphériques d'Orelle, administrative services



©A3V_Arthur-Bertrand-Les3Vallées

Administrative services for ski passes, information, deliveries, etc.
Open Monday to Friday:
9:00 AM - 12:00 PM / 2:00 PM - 5:00 PM

📍 Francoz 73140 Orelle
+33 4 79 56 88 01
info@orelle.net

Ski equipment Rental "Orelle Sports"



©OT_Orelle

Ski Equipment Rental and Sales

Winter Season
Every day from 8:30 AM to 6:00 PM.

📍 Francoz 73140 Orelle
+33 4 79 56 87 73
orelle.sports3000@orange.fr

Ski Lockers



112 lockers for 4 people and 38 lockers for 2 people. All digitally secured, heated, and equipped with boot dryers for your comfort.

4-person locker: 13 euros/night
2-person locker: 7 euros/night

Winter Season
Open from 7:30 AM to 6:00 PM

📍 Gondola parking 73140 Orelle
+33 4 79 56 88 01
info@orelle.net

Shops and services

Restaurant HOB Orelle



©Hob Orelle

An authentic, friendly, and delicious restaurant!

Open year-round, daily.

📍 Route de Francoz
73140 Orelle

Mountain restaurant Chalet Chinal Donat



©OT_Orelle

Experience a mountain-style atmosphere at this restaurant in Plan Bouchet, easily accessible by cable car or from the slopes. A panoramic, south-facing terrace sheltered from the wind makes Chalet Chinal-Donat the perfect spot for a lunch break!

Open daily from 23/11/2024 to 04/05/2025.

📍 Plan Bouchet
73140 Orelle
+33 6 59 16 32 25 / +33 4 79 56 53 01

Restaurant/Bar Le Hameau des Eaux d'Orelle



©Restaurant du Hameau des Eaux d'Orelle

For a family-friendly dining experience, Christine offers a traditional menu with Savoyard specialties.

Open daily from 02/12/2024 to 04/05/2025.

📍 Le Hameau des Eaux d'Orelle
73140 Orelle
+33 6 46 54 63 57

Les 4 Vallées Pub



Located at the cable car square in Francoz, enjoy a cozy ambiance for coffee, a snack, or a friendly aperitif on the sunny terrace starting in March. Bread available upon reservation, as well as tobacco products.

Open from 23/11/2024 to 04/05/2025, from 8 am to 7 pm.

📍 Cable Car Square
Francoz 73140 Orelle
+33 4 79 56 88 08

Souvenir Shop



©OT_Orelle

Offers clothing, ski masks, helmets, and souvenirs.

Open from 23/11/2024 to 04/05/2025

📍 Cable car square
+33 4 79 56 87 73
Email: orelle.sports3000@orange.fr

Grocery Orelle's Shop



Offering local products, fruits, vegetables, souvenirs, and bread upon order.

Open daily from 23/11/2024 to 04/05/2025

7:30 am - 12 pm / 15 :30 pm - 8 pm

📍 Résidence Hameau des Eaux d'Orelle
73140 Orelle
04 79 05 47 81 / 06 25 41 09 60

Library



©Pixabay

Offering books on mountain themes, novels, and pocket books. Open year-round, following the opening hours of the Tourist Office.

📍 Francoz 73140 Orelle
+33 (0)4 79 56 87 22
contact@orelletourisme.net
www.orelle.net

Board Game Rentals



©Pixabay

Free rental of board games and DVDs with a refundable deposit of 30 euros. Available year-round, following the opening hours of the Tourist Office.

📍 Francoz 73140 Orelle
+33 (0)4 79 56 87 22
contact@orelletourisme.net
www.orelle.net

Others services

Mairie d'Orelle



©Gagnière

Orelle, a village with a thousand and one facets. Monday to Friday from 2 PM to 5 PM. Closed on Saturdays, Sundays, and public holidays.

Chef lieu 73140 Orelle
+33 (0)4 79 56 55 76
info@orelle.fr
www.orelle.fr/

Community Post Office



©La Poste

Local post office services for sending mail and packages. No ATM available. Open Monday to Friday from 10:00 am to 12:30 pm, with Wednesday hours from 10:30 am to 12:30 pm. Closed on public holidays.

73140 Orelle
+33 (0)4 79 56 52 97

Automatic Laundry



©Pixabay

Self-service laundry and dryers available year-round.

Le Hameau des Eaux d'Orelle
73140 Orelle

Shuttle Bus Bonvillard-Cable Car, via Hameau des Eaux d'Orelle



©Transalpes

Free winter shuttle service between the Hameau des Eaux d'Orelle residence and the cable car. During school holidays, extended service to the Bonvillard hamlet.

Service operates from 23/11/2024 to 03/05/2025.

73140 Orelle
04 79 56 87 22

SkiBus Orellette-Télécabine



©OT_Orelle

Free shuttle service between the Orellette hamlet and the cable car to ease your travel. Available only during Christmas and February school holidays

73140 Orelle
04 79 56 87 22
contact@orelletourisme.net

TAXI Services

Croin Rémy
+33 6 60 38 01 23



Electric Charging Stations



©Freepik

15 charging points available in the cable car parking area. Flat rate: starting from €0.40 per kWh.

Open year-round.

Parking de la télécabine
RD1006
73140 Orelle
04 79 56 88 01
info@orelle.net

Ambroise Croizat Health Center



©Alban Pernet

The Ambroise Croizat Health Center provides physiotherapy, nursing, and dialysis services.

Open from 01/01 to 31/12, closed Sundays and on 1st January and 25th December.

Secretariat hours: Monday to Friday 8 am - 12 pm and 2 pm - 6 pm, Saturday 8 am - 12 pm.

39, Avenue de la République
73140 Saint-Michel-de-Maurienne
04 58 25 00 52

mspambroisecroizat@gmail.com

Télégraphe's Pharmacy



Pharmacy

Open from January 1 to December 31,
from 8:30 am to 7:00 pm.

Closed on Sundays and public holidays.

27 Rue du Général Ferrié
73140 Saint-Michel-de-Maurienne
04 79 56 51 88
pharmaciedutelegraphe73@gmail.com
www.pharmaciedutelegraphe.fr/

Hospital Center



Emergency, Maternity...
Open year-round.

81 rue du Docteur Grange
73300 Saint-Jean-de-Maurienne
04 79 20 60 20

Where to stay ?

Hotel, unique lodging, chalet,
camping...



Orelle
LES 3 VALLÉES

HOB Orelle



NEW 2024 !

A new Hob is opening in Orelle, blending the comfort of a hotel with the friendly atmosphere of a youth hostel—this is the essence of the HOB concept.

The venue offers 84 beds in a variety of accommodations, including double rooms, family rooms for groups of four, and six-bed dormitories known as DODOS.

Located in an ideal spot close to the cable car station.


With a strong commitment to inclusivity, 50% of the rooms are accessible for guests with reduced mobility.

Designed for sports enthusiasts, it features dedicated ski and bike storage for convenience and security.

The spacious 150 m² common area includes a bar, games, a shop, an exhibition space, an outdoor terrace, and a restaurant focused on local products and traditional Savoyard dishes, prioritizing short supply chains.

Throughout the year, Hob Orelle will host a variety of cultural and festive events.

Open : from 05/12/2024 to 04/05/2025.

 Route de Francoz 73140 Orelle
<https://www.evihob.com/hobs/hob-orelle/presentation/>



©HOB



©Evi Hob



©Evi Hob



©Evi Hob

Camping Municipal d'Orelle



Open year-round, the campsite offers 17 pitches with electricity and heated restrooms.

Reservation is required.

Located 1 km from the cable car departure point, the campsite is easily accessible for skiers in winter.

During school holidays in winter, a free shuttle service (bookable through the tourist office) is available for transportation to and from the campsite.

Nearby, enjoy free access to a sports area and pétanque court. Please note that during the off-season, no shops are open in Orelle. Plan to stock up in Saint-Michel-de-Maurienne (6 km away) or Modane (10 km away).

Coach parking • General parking • Water hookups • Electrical

hookups • Caravan area • Tennis court • Hot showers •

Refrigerator • Heated restrooms • Sink cabins • Separate toilets •

Pets allowed •

Mountain setting • Secluded location

Number of motorhome pitches: 13
Number of caravan pitches: 17
Number of general pitches: 17

Open year-round.

Chef lieu 73140 Orelle

Tél. 04 79 56 87 22

contact@orelletourisme.net

www.orelle.net

Longitude : 6.536522 - Latitude : 45.208877 - Altitude : 980 m



RATES

Flat rate of €25 per night

Rates valid from 23/11/24 to 04/05/25.



Hébergement insolite : LA BOHEME



Treat yourself to a unique getaway with a weekend or vacation stay in this cozy and peaceful caravan, designed for comfort with a warm, cocoon-like decor.

If you're looking for an unusual lodging experience in Maurienne, Savoie, this is it!

This caravan accommodates 2-4 people within 22m² and is located in the tranquil, rejuvenating surroundings of Orelle's municipal campsite, about 800m from the cable car.

This cozy space includes a kitchenette and dining area, a 'mountain corner' with bunk beds, an alcove with a double bed, and a bathroom. Linens (sheets, towels, dishcloths) are provided.

And a special 'plus,' La Bohème guarantees "Made in France" quality and eco-responsibility:

- Environmental care: All components are eco-labeled.
- Sustainable development: Durable, noble Douglas pine and spruce, sourced from sustainably managed forests in Occitania (PEFC-certified), are used, and wood waste is recycled.
- French craftsmanship: Fabrication, assembly, and installation are carried out entirely in the workshop at St. Vincent de Barbeyrargues, near Montpellier in Hérault

Entire accommodation
Number of bedrooms: 1
Open year-round.
Located at Municipal Camping, Chef Lieu, 73140
Orelle
Phone: +33 4 79 56 87 22
Email: contact@orelletourisme.net

Coordinates: Longitude 6.536861 - Latitude 45.208868

RATES

Rates valid from 31/08/24 to 03/05/25
€310 to €500 per week
€65 to €100 per night (minimum stay of 2 nights)



Hébergement insolite : LE CABOUE



@Mathilde_Meteye

Entire accommodation
Number of beds: 2 (1 double bed, 1 single bed)

Open year-round

Municipal Camping, Chef Lieu, 73140 Orelle

Phone: +33 4 79 56 87 22

Email: contact@orelletourisme.net

Coordinates: Longitude 6.536861 - Latitude 45.208868

RATES

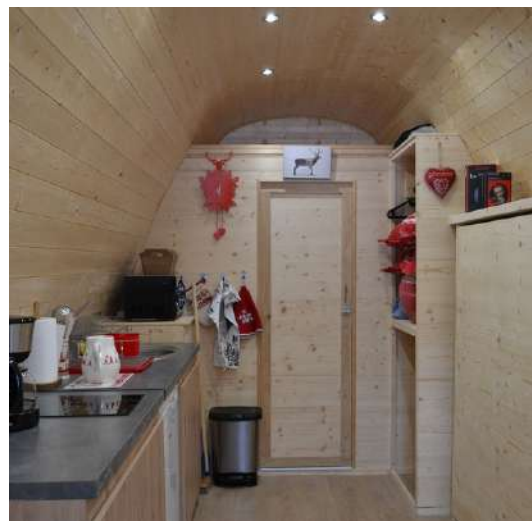
Weekly: €250-€375
Nightly: €50-€75 (minimum stay of 2 nights)
Rates valid from 31/08/24 to 03/05/25.

Enjoy a unique and extraordinary experience during a weekend or vacation in this pod, a cozy, forest-style cabin designed for comfort and tranquility with a cocoon-like decor.

This 15m² pod for 2 people is located at Orelle's municipal campsite, offering a peaceful and rejuvenating environment.

It includes a living area with a kitchenette, a table, one double bed, and a small single bed (suitable for a child or teenager). It also features a shower room with a toilet and sink.

- Pets not allowed
- End-of-stay cleaning must be done
- Heated ski locker near the cable car
- Board games available
- Linens included (sheets, towels, dishcloths)



@OT_Orelle



@OT_Orelle

Le Hameau des Eaux d'Orelle SPA by Alpvision Résidences



Alpvision Residences has specialized in furnished tourist rentals for several decades.

Located just 5 minutes from the cable car, this residence offers apartments for rent, making it an ideal and easily accessible starting point for skiers in winter (direct access to Val Thorens slopes within 30 minutes).

Comprising eight chalets, the residence is fully equipped for relaxation, featuring a pool, spa, comfort and wellness areas (with massages and treatments), a restaurant, and an on-site grocery store. The apartments, styled in a modern mountain design with balconies, can accommodate 2 to 8 people.

Enjoy complimentary Spa access included with your rental (additional services available à la carte).

A 100 m² seminar room with a terrace is also available for event organization.

Long-term rentals available upon request.
In summer, weekly rentals start at €249.

Total capacity:
142 people, 34 apartments
or studios.

Le Hameau des Eaux d'Orelle
73140 Orelle
Phone: +33 9 64 42 69 40
Email: orelle@alpvisionresidences.com
[Website](http://www.alpvisionresidences.com/fr/)

Coordinates: Longitude 6.550823 - Latitude 45.208809 -
Altitude: 980 m

www.alpvisionresidences.com/fr/



©ARG



©ARG



©ARG

Orelle-Les 3 Vallées by Resid&Co (Gestionnaire)



©OTorelle

Total capacity : 450 people

Le Hameau des Eaux d'Orelle 73140 Orelle

Tél. +33(0)1 85 73 31 30 - +33 (0)06 99 44 21 71

orelle@residandco.com

www.residenceorelle3vallees.com/fr/

Longitude : 6.550823 - Latitude : 45.208809 - Altitude : 980 m



©OTorelle

Located just 5 minutes from the cable car, this residence offers rental apartments, making it an ideal and convenient starting point for skiers in winter (direct access to Val Thorens slopes within 30 minutes).

The residence is made up of eight chalets, fully equipped for relaxation and comfort. Facilities include a pool, spa, wellness and comfort areas (with massages and treatments), an on-site restaurant, and a grocery store.

The apartments, featuring a modern mountain-style decor and balconies, can accommodate between 2 and 8 people. Both outdoor and covered parking are available, along with free Wi-Fi.



Private Parking • Covered Parking • General Parking • Spa Area •

Hamam • Sauna • Laundry • Swimming Pool • Indoor Pool •

Grocery/Convenience Store • Shuttle Service



Nbr pers	Class.	Nbr of rooms	Name	Phone	Web site or mail	Address	Area in m2	Labels
2		0	Studio 2 pers COMBE	+33 (0)4 79 56 87 22	contact@orelletourisme.net	Le Hameau des Eaux d'Orelle	28 m	
2		1	Studio 2 pers (Ref CHEZ CHRISTINE)	+33 (0)4 79 56 87 22	contact@orelletourisme.net	FRANCOZ	25 m	
4		0	Studio 4 personnes CARON EXPRESS		dgaray@hotmail.fr	FRANCOZ	20 m	
4		0	Studio 4 pers BRICOLIT	+33 (0)4 79 56 87 22	contact@orelletourisme.net	Le Hameau des Eaux d'Orelle	27 m	
4		0	Studio 4 pers HARLEZ	+33 (0)4 79 56 87 22	contact@orelletourisme.net	Le Hameau des Eaux d'Orelle	25 m	
4		0	Studio 4 pers HEISER	+33 (0)4 79 56 87 22	https://reservation.orelle.net/	Le Hameau des Eaux d'Orelle	26 m	
4		2	Appartement 1 Chambre 4 pers RIVINE	+33 (0)4 79 56 87 22	contact@orelletourisme.net	Le Hameau des Eaux d'Orelle	34 m	
4		2	Appartement 1 chambre 4 pers (Ref LEBRUN)	+33 (0)4 79 56 87 22	contact@orelletourisme.net	Le Hameau des Eaux d'Orelle	35 m	
4		2	Appartement 2 pièces 4 pers RENAULT	+33 (0)4 79 56 87 22	contact@orelletourisme.net	Le Hameau des Eaux d'Orelle	32 m	
4		2	Appartement 1 chambre 4 pers MARTINEZ	+33 (0)4 79 56 87 22	contact@orelletourisme.net	Le Hameau des Eaux d'Orelle	34 m	
4		2	Appartement 1 chambre 4pers HAUKINGHAM	+33 (0)4 79 56 87 22	contact@orelletourisme.net	Le Hameau des Eaux d'Orelle	27 m	
4	**	0	Studio Lagopède 4 pers	+33 (0)4 79 56 87 22	contact@orelletourisme.net	Francoz	35 m	
4	**	1	Studio n°4 4 pers BISCHOFF	+33 (0)4 79 56 87 22	https://reservation.orelle.net/	Le Hameau des Eaux d'Orelle	26 m	
4	**	1	Studio n°5 4 pers BISCHOFF	+33 (0)4 79 56 87 22	https://reservation.orelle.net/	Le Hameau des Eaux d'Orelle	26 m	
4	**	1	Studio n°6 4 pers BISCHOFF	+33 (0)4 79 56 87 22	https://reservation.orelle.net/	Le Hameau des Eaux d'Orelle	26 m	
5		0	Studio 4/5 pers. LE BOUQUETIN (Ref. GIRARD)	+33 (0)4 79 56 87 22	contact@orelletourisme.net	Francoz	50 m	
5		0	Studio 4 pers SAUGE	+33 (0)4 79 56 87 22	contact@orelletourisme.net	Le Hameau des Eaux d'Orelle	30 m	
5		1	Studio 4 pers JANDYER	+33 (0)4 79 56 87 22	contact@orelletourisme.net	Le Hameau des Eaux d'Orelle	27 m	
5		2	Meuble DEVAUX	+33 (0)6 08 72 42 16	orellederoux@gmail.com	Le Hameau des Eaux d'Orelle	31 m	
5		2	Appartement 2 pièces 5 pers SCI CIME CARON	+33 (0)4 79 56 87 22	contact@orelletourisme.net	Le Hameau des Eaux d'Orelle	32 m	
5		2	Appartement 1 chambre 4/5 personnes (Ref DROULLARD)	+33 (0)4 79 56 87 22	contact@orelletourisme.net	Le Hameau des Eaux d'Orelle	33 m	
6		2	Appartement 2 pièces cabine 4/6 personnes (Ref. HEINE PIETTE)	+33 (0)4 79 56 87 22	contact@orelletourisme.net	Le Hameau des Eaux d'Orelle	31 m	
6		2	Appartement 1 chambre 6pers HAUKINGHAM	+33 (0)4 79 56 87 22	contact@orelletourisme.net	Le Hameau des Eaux d'Orelle	32 m	
6		3	La Roche - L'ordis Blanc - Appartement 6 personnes	0032 478 56 46 20	info@leurdisorelle.fr	Francoz	65 m	
6		3	Appartement 3 pièces 6 pers GERME	+33 (0)4 79 56 87 22	contact@orelletourisme.net	Le Hameau des Eaux d'Orelle	32 m	
6		3	Appartement 3 pièces 7 pers l'Express	+33 (0)4 79 56 87 22	contact@orelletourisme.net	Francoz	74 m	
6		3	Appartement 2 chambres 4/6 pers WHITELAW	+33 (0)4 79 56 87 22	contact@orelletourisme.net	Francoz	57 m	
6		3	Appartement 3 pièces 6 pers Le Galeras	+33 (0)4 79 56 87 22	contact@orelletourisme.net	Le Noiray	44 m	
6		3	Maison 3 pièces 6 pers "La Maison du Bonheur"	+33 (0)4 79 56 52 72	lamdbt73140@gmail.com	Chef Lieu	44 m	
6		3	Appartement 3 pièces 6 pers Le Badrat	+33 (0)4 79 56 87 22	contact@orelletourisme.net	Le Noiray	44 m	
6		4	Maison DUFOUR 4 pièces 6 pers	+33 (0)6 03 00 81 96	andre.albus@free.fr	Bonvillard	100 m	

Tourist Office of Orelle - Francoz - 73140 ORELLE

+33 4 79 56 87 22





contact@orelletourisme.net



www.orelle.net



Nbr pers	Class.	Nbr of rooms	Name	Phone	Web site or mail	Address	Area in m2	Labels
6		4	Chalet 4 pièces 6 pers "OREADESI"	+33 (0)6 08 77 67 40	andrequer@wanadoo.fr	Orellette	55 m	
6	**	2	Appartement n°112 2 pièces 4/6 pers BISCHOFF	+33 (0)4 79 56 87 22	contact@orelletourisme.net	Le Hameau des Eaux d'Orelle	31 m	
7		3	Appartement Les Charmettes 3 pièces 6 pers	+33 (0)6 70 34 06 32	jerome.vergey@orange.fr	Francoz	45 m	
8		3	Appartement 2 pièces 8 pers BANDEIRA		antoinettebandeira@gmail.com	Le Hameau des Eaux d'Orelle	62 m	
8		3	Appartement 3 pièces 8 pers La Somaille	+33 (0)4 79 56 87 22	contact@orelletourisme.net	Chef-Lieu	54 m	
8		4	Maison KIEFFER 4 pièces 8 personnes	+33 (0)6 11 01 07 64	jkieffer@actemium.com	Francoz		
8		4	Maison Pierre Aigüe 8 personnes	+33 (0)4 79 56 87 22	contact@orelletourisme.net	Chef-lieu	130 m	 
8	***	4	Maison L'ETERLOU 8 pers	+33 (0)4 79 56 87 22	contact@orelletourisme.net	Chef-lieu	91 m	
10			Appartement Les Charmettes 4 pièces 10 pers	+33 (0)6 70 34 06 32	jerome.vergey@orange.fr	Francoz	55 m	
10	**	3	Gîte Rosati 3 pièces 6 pers	+33 (0)4 79 56 87 22	contact@orelletourisme.net	Francoz	90 m	
10	**	4	Triplex BLACK SLOPE 10 pers	+33 (0)4 79 56 87 22	contact@orelletourisme.net	Chef Lieu	160 m	
10	**	4	Chalet Monchu 6 pièces 10 pers	+33 (0)4 79 56 87 22	contact@orelletourisme.net	Bonvillard	100 m	
10	***	5	La SelectiCimes : appartement 10/12 personnes	+33 (0)4 79 56 87 22	contact@orelletourisme.net	Francoz	145 m	
12		5	Maison LA PROVENCHE 5 pièces 12 pers	+33 (0)4 79 56 87 22	contact@orelle.net	Les Provençères	142 m	
12	**	5	Chalet Saint-Jacques 6 pièces 12 pers	+33 (0)4 79 56 87 22	contact@orelletourisme.net	Francoz	110 m	
14		4	Appartement Les Charmettes 5 pièces 14 pers	+33 (0)6 70 34 06 32	jerome.vergey@orange.fr	Francoz	110 m	
16		7	Maison Le Repère des Cerfs 16 personnes	+33 (0)	etiennequebbs@icloud.com	Chef-Lieu	220 m	

Tourist Office of Orelle - Francoz - 73140 ORELLE

+33 4 79 56 87 22



contact@orelletourisme.net



www.orelle.net

